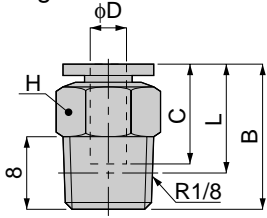


Control Series Fixed Orifice Type Joint

unit:mm

PC FIXED ORIFICE

Straight



Model	Tube dia. φD	B	L	C	H	Mass (g)
PC 4-01 □	4	21	17	15	10	8.5
PC 6-01 □	6	22.5	18.5	17	12	9
PC 8-01 □	8	28	24	18.5	14	15

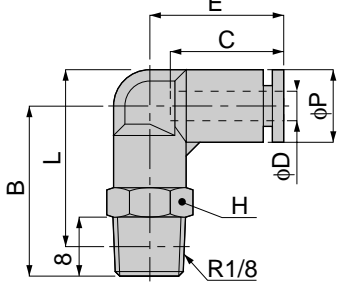
Code	0.3	0.4	0.5	0.6	0.7	0.8	0.9	1.0	1.1
Eff. a. (mm ²)	0.05	0.1	0.15	0.2	0.25	0.35	0.4	0.5	0.7

Code	1.2	1.3	1.4	1.5	1.6	1.7	1.8	1.9	2
Eff. a. (mm ²)	0.85	1.0	1.15	1.45	1.65	1.85	2.1	2.3	2.5

unit:mm

PL FIXED ORIFICE

Elbow



Model	Tube dia. φD	B	L	φP	C	E	H	Mass (g)
PL 4-01 □	4	23.5	24.5	10	15	18.5	10	12
PL 6-01 □	6	25	27	12.5	17	20	12	14
PL 8-01 □	8	28	31	14.5	18.5	23	14	18

Code	0.3	0.4	0.5	0.6	0.7	0.8	0.9	1.0	1.1
Eff. a. (mm ²)	0.05	0.1	0.15	0.2	0.25	0.35	0.4	0.5	0.7

Code	1.2	1.3	1.4	1.5	1.6	1.7	1.8	1.9	2
Eff. a. (mm ²)	0.85	1.0	1.15	1.45	1.65	1.85	2.1	2.3	2.5