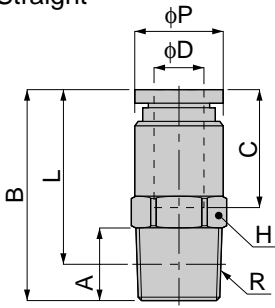


Control Series Constant Flow Speed Controller



Straight



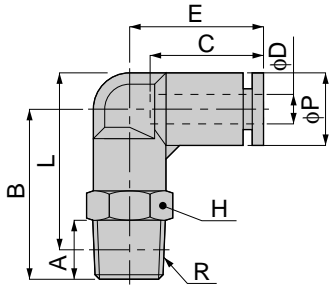
Model	Tube dia. φD	R	A	B	L	φP	C	H	Mass (g)	Free flow Eff. a. (mm ²)
JKC 4-01	4	R1/8	8	23.5	19.5	10	11	10	9.5	3.1 ~ 3.5
JKC 6-01	6	R1/8	8	24	19.5	10	12	10	8.5	3.9 ~ 4.6
JKC 6-02		R1/4	11	27.5	21.5	11		14	17	6.7 ~ 7.3
JKC 8-01	8	R1/8	8	30	26	14	18.5	14	17	3.4 ~ 4.5
JKC 8-02		R1/4	11	33	27				20.5	6.4 ~ 7

Orifice I.D. (mm)	φ0.3	φ0.4	φ0.5	φ0.6	φ0.7	φ0.8	φ0.9	φ1.0	φ1.1
Control flow Eff. a. (mm ²)	0.06	0.11	0.16	0.2	0.3	0.4	0.5	0.65	0.8

Orifice I.D. (mm)	φ1.2	φ1.3	φ1.4	φ1.5	φ1.6	φ1.7	φ1.8	φ1.9	φ2.0
Control flow Eff. a. (mm ²)	0.9	1.1	1.25	1.5	1.8	2	2.3	2.55	2.8



Elbow



Model	Tube dia. φD	R	A	B	L	φP	C	E	H	Mass (g)	Free flow Eff. a. (mm ²)
JKL 4-01	4	R1/8	8	26	26.5	10.5	15	17	10	11.5	3.1 ~ 3.5
JKL 6-01	6	R1/8	8	25.5	27.5	13	17	20	12	13.5	3.9 ~ 4.6
JKL 6-02		R1/4	11	28.5	28.5				14	19	6.7 ~ 7.3
JKL 8-01	8	R1/8	8	28.5	31.5	15	18.5	23	14	18.5	3.4 ~ 4.5
JKL 8-02		R1/4	11	31.5	32.5					22.5	6.4 ~ 7

Orifice I.D. (mm)	φ0.3	φ0.4	φ0.5	φ0.6	φ0.7	φ0.8	φ0.9	φ1.0	φ1.1
Control flow Eff. a. (mm ²)	0.06	0.11	0.16	0.2	0.3	0.4	0.5	0.65	0.8

Orifice I.D. (mm)	φ1.2	φ1.3	φ1.4	φ1.5	φ1.6	φ1.7	φ1.8	φ1.9	φ2.0
Control flow Eff. a. (mm ²)	0.9	1.1	1.25	1.5	1.8	2	2.3	2.55	2.8

Flow characteristics

