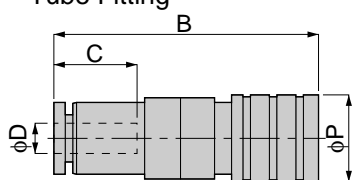


Tube Fitting Series Light Coupling

E3, E7 Serie

CPS E3.E7 SERIES

Straight
Tube Fitting



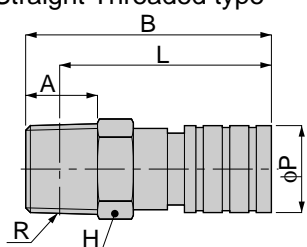
Model	Tube dia. ϕD	B	ϕP	C	Mass (g)	Eff. a. (mm ²)
CPS E3-4	4	29.5	9.5	11	8.5	3.3
CPS E7-6	6	32	11.5	12	12.5	7.7

unit:mm



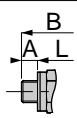
CPS E3.E7 SERIES

Straight Threaded type



Model	R	A	B	L	ϕP	H	Mass (g)	Eff. a. (mm ²)
CPS E3-M5	M5×0.8	3	22	16	9.5	9	6.5	3.2
CPS E3-01	R1/8	8	27.5	23.5		10	11	3.8
CPS E7-M5	M5×0.8	3	24.5	17	11.5	10	9.5	4
CPS E7-01	R1/8	8	29.5	25.5			12.5	8.3

unit:mm



Metric thread type

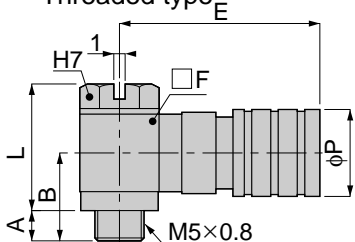


unit:inch

MODEL	UNF & NPT	A	B	L	ϕP	H	Weight (g)	Eff.a. mm ²	Cv
CPSE 3-U10U	10-32UNF	0.14	0.87	0.61	0.37	7/16	7.7	3.2	0.17
CPSE 3-N1U	1/8	0.31	1.08	0.93	0.37	7/16	11.8	3.8	0.21
CPSE 7-U10U	10-32UNF	0.14	0.96	0.65	0.45	7/16	10.9	4.0	0.22
CPSE 7-N1U	1/8	0.31	1.16	1.00	0.45	7/16	13.8	8.3	0.45

CPS E3.E7 SERIES

Universal Elbow
Threaded type



Model	A	B	L	ϕP	E	$\square F$	Mass (g)	Eff. a. (mm ²)
CPS E3H-M5	3	9.5	13	9.5	21.5	8	10.5	2
CPS E7H-M5	3	11	15.5	11.5	22	10	16.5	2.6

unit:mm

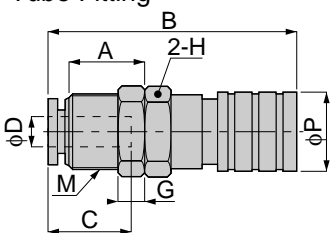


unit:inch

MODEL	UNF	A	B	ϕP	E	F	H	Weight (g)	Eff.a. mm ²	Cv
CPSE 3H-U10U	10-32UNF	0.12	0.63	0.37	0.85	0.31	5/16	10.9	2.0	0.11
CPSE 7H-U10U	10-32UNF	0.14	0.73	0.45	0.87	0.39	5/16	16.9	2.6	0.14

CPS E3.E7 SERIES

Straight Bulkhead
Tube Fitting



Model	Tube dia. ϕD	M	A	B	ϕP	C	H	G	Mass (g)	Eff. a. (mm ²)
CPS E3M-4	4	M9×0.5	8.5	29.5	9.5	11	10	3	10	3.3
CPS E7M-6	6	M12×1	9.5	32	11.5	12	14	3	17.5	7.7

unit:mm

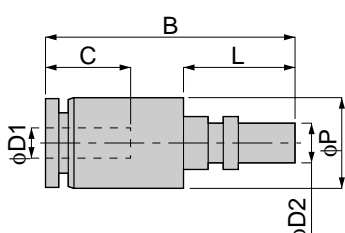


unit:inch

MODEL	Tube dia. ϕD	UNF	A	B	ϕP	C	H	Weight (g)	Eff.a. mm ²	Cv
CPSE 3M-1/8U	5/32	7/16-20UNF	0.34	1.16	0.37	0.43	1/2	13.6	3.3	0.18
CPSE 3M-5/32U	1/8	7/16-20UNF	0.34	1.16	0.37	0.43	1/2	13.5	3.3	0.18

CPP E3.E7 SERIES

Straight Tube Fitting



Model	Tube dia. $\phi D1$	$\phi D2$	B	L	ϕP	C	Mass (g)	Eff. a. (mm ²)
CPP E3-4	4	3.5	21.5	9	8	11	3	4.2
CPP E7-6	6	5.5	23	10	10	12	4.5	11.4

unit:mm

