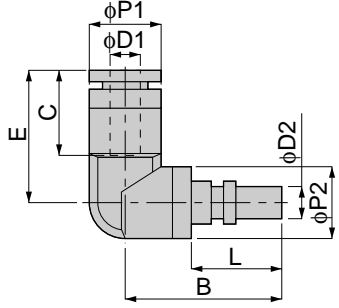


Tube Fitting Series Light Coupling

CPP E3.E7 SERIES

Elbow
Tube Fitting



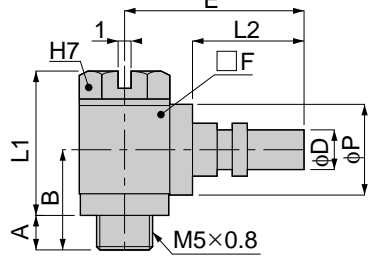
Model	Tube dia. φD1	φD2	B	L	φP1	φP2	C	E	Mass (g)	Eff. a. (mm ²)
CPP E3L-4	4	3.5	16	9	8	8	11	15	3.5	3.5
CPP E7L-6	6	5.5	19	10	10.5	10	12	16.5	5.5	8.8

unit:mm



CPP E3.E7 SERIES

Universal Elbow
Threaded Type



Model	φD	A	B	L1	L2	φP	E	□F	Mass (g)	Eff. a. (mm ²)
CPP E3H-M5	3.5	3	9.5	13	9	8	18	8	6.5	1.8
CPP E7H-M5	5.5	3	11	15.5	10	10	18.5	10	10.5	2.6

unit:mm

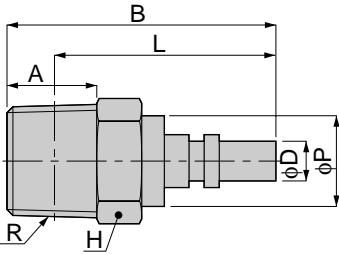


unit:inch

MODEL	UNF	φ D	A	B	L	φ P	E	H	F	Weight (g)	Eff.a. mm ²	Cv
CPPE 3H-U10U	10-32UNF	0.14	0.12	0.63	0.51	0.31	0.71	5/16	0.31	6.4	1.8	0.10
CPPE 7H-U10U	10-32UNF	0.22	0.14	0.73	0.59	0.39	0.73	5/16	0.39	11.0	2.6	0.14

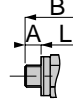
CPP E3.E7 SERIES

Straight Threaded Type



Model	φD	R	A	B	L	φP	H	Mass (g)	Eff. a. (mm ²)
CPP E3-M5	3.5	M5×0.8	3	15.5	9.5	8	7	2	4
CPP E3-01		R1/8	8	23	9		10	8	4.3
CPP E7-M5	5.5	M5×0.8	3	16.5	10.5	10	9	4	4.1
CPP E7-01		R1/8	8	26	10		10	8	12.1

unit:mm



Metric thread type



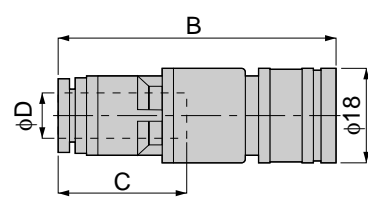
unit:inch

MODEL	φ D	UNF & NPT	A	B	L	φ P	H	Weight (g)	Eff.a. mm ²	Cv
CPPE 3-U10U	0.14	10-32UNF	0.14	0.61	0.35	0.31	9/32	1.8	4.0	0.22
CPPE 3-N1U	0.14	1/8	0.31	0.91	0.35	0.31	7/16	8.9	4.3	0.23
CPPE 7-U10U	0.22	10-32UNF	0.14	0.65	0.39	0.39	5/16	3.4	4.1	0.22
CPPE 7-N1U	0.22	1/8	0.31	1.02	0.39	0.39	7/16	9.1	12.1	0.66

15 Serie

CPS 15 SERIES

Tube Fitting Type



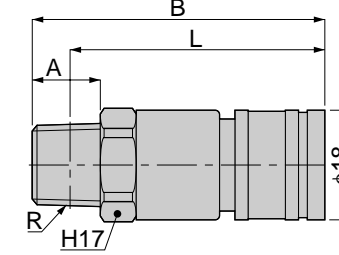
Model	Tube dia. φD	B	C	Mass (g)	Eff. a. (mm ²)
CPS 15-6	6	50	17	12.5	11
CPS 15-8	8	51	18.5	13.5	18
CPS 15-10	10	54.5	21	17	

unit:mm



CPS 15 SERIES

Taper Threaded Type



Model	R	A	B	L	Mass (g)	Eff. a. (mm ²)
CPS 15-01	R1/8	8	44	40	25.5	18
CPS 15-02	R1/4	11	47	41	29	
CPS 15-03	R3/8	12	48	41.5	37.5	

unit:mm



unit:inch

MODEL	NPT	A	B	L1	L2	φ P	H	Weight (g)	Eff.a. mm ²	Cv
CPS 15-N1U □	1/8	0.31	1.73	1.57	0.65	0.71	11/16	26.6	18.0	0.98
CPS 15-N2U □	1/4	0.43	1.85	1.61	0.65	0.71	11/16	30.4	18.0	0.98
CPS 15-N3U □	3/8	0.47	1.89	1.63	0.65	0.71	11/16	38.7	18.0	0.98