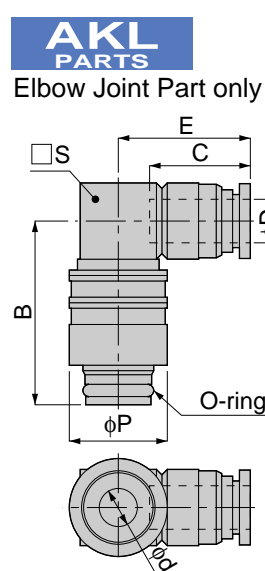


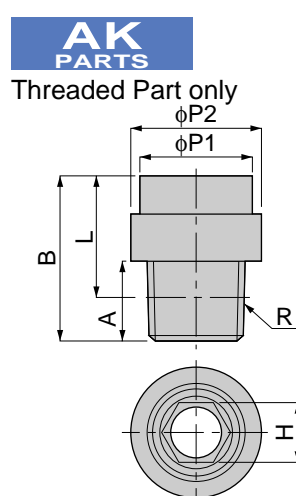
Tube Fitting Series Die Temperature Control Fitting



Model	Tube (I.D.×O.D.) φD	B	φP	C	E	φd	S	Mass (g)	Orifice (φmm)
AKL 08-6P	6×4	27	15	17	22	4	12	37	4
AKL 08-8P	8×6	28	15	18.5	24	6	14	42.5	6
AKL 10-8P	8×6	33	18	18.5	24	8.1	14	42.5	6
AKL 10-10P	10×7.5	34.5	18	21	28	8.1	17	72.5	7.5
AKL 10-12P	12×9	40	18	23.5	31	8.1	20	108	8.1



unit:mm



Model	R	A	B	L	φP1	φP2	H	Mass (g)	Orifice (φmm)
AK 08-01S	R1/8	8	18.5	14.5	13	15	5	10	5.3
AK 08-02S	R1/4	11	20	14	13	15	6	13	6.3
AK 10-01S	R1/8	8	21	17	15.5	18	5	15	5.3
AK 10-02S	R1/4	11	23	17	15.5	18	8	15.5	8.5
AK 10-03S	R3/8	12	23	16.5	15.5	18	8	22.5	8.5
AK 10-04S	R1/2	15	26	18	15.5	22	8		

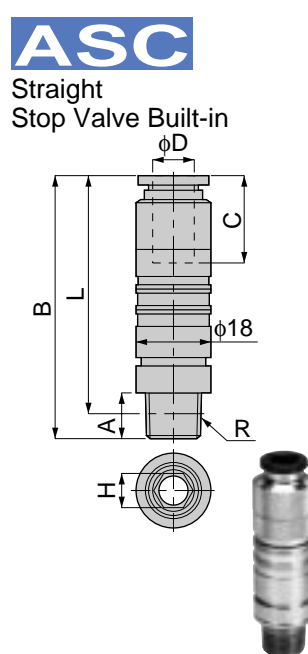
※AS(threaded part only) is not interchangeable.



unit:mm

unit:inch

MODEL	NPT	A	B	L	φ P1	φ P2	H	Weight (oz)	Orifice φ inc
AK 08-N1SU	1/8	0.31	0.73	0.18	0.51	0.59	3/16	0.35	0.21
AK 08-N2SU	1/4	0.43	0.79	0.18	0.51	0.59	7/32	0.46	0.25
AK 10-N1SU	1/8	0.31	0.83	0.22	0.61	0.71	3/16	0.54	0.21
AK 10-N2SU	1/4	0.43	0.91	0.22	0.61	0.71	5/16	0.56	0.33
AK 10-N3SU	3/8	0.47	0.91	0.22	0.61	0.71	5/16	0.80	0.33



Model	Tube (I.D.×O.D.) φD	R	A	B	L	C	H	Mass (g)	Orifice (φmm)	Eff.a.(cv) (mm ²)
ASC 10-601	6×4	R1/8	8	57	53	17	5	67	5	12.6(0.66)
ASC 10-602		R1/4	11		51		66.5	12.9		
ASC 10-603		R3/8	12		50.5		73	0.67		
ASC 10-801	8×6	R1/8	8	60.5	56.5	18.5	5	71	5.3	19.7(1.17)
ASC 10-802		R1/4	11		54.5		70.5	21.9		
ASC 10-803		R3/8	12		54		76.5	1.27		
ASC 10-1001	10×7.5	R1/8	8	62.5	58.5	21	5	68	5.3	18.6(1.37)
ASC 10-1002		R1/4	11		56.5		67.5	24.5		
ASC 10-1003		R3/8	12		56		74	1.64		
ASC 10-1201	12×9	R1/8	8	64.5	60	23.5	5	74	5.3	18.6(1.48)
ASC 10-1202		R1/4	11		58.5		73.5	24.7		
ASC 10-1203		R3/8	12		58		80	1.81		

unit:mm

