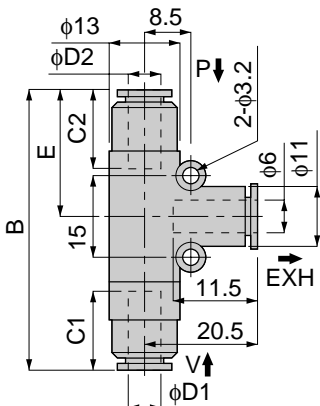


unit:mm



VU

Pipe Type Union Straight Concentrated Exhaust

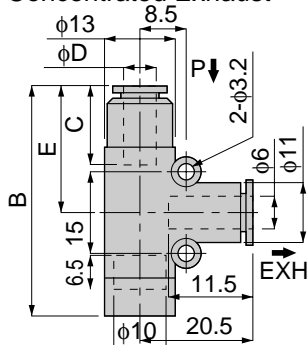


Model	Tube dia. φD1	Tube dia. φD2	B	C1	C2	E	Nozzle dia. (mm)	Final vacuum (-KPa)	Suction flow (Nℓ/min)	Air consumption (Nℓ/min)	Mass (g)
VUH 05-44J	4	4	49	11	11	22	0.5	91	7	11.5	21
VUH 05-46J		6	50		11.5	22.5					20.5
VUH 05-64J	6	4	50.5	11.5	11	22					20
VUH 05-66J		6			11.5	22.5					19.5
VUH 07-44J	4	4	55.5	11	11	25.5	0.7	92	12.5 (12)	23	22.5
VUH 07-46J		6	56.5		11.5	26					21.5
VUH 07-64J	6	4	57	11.5	11	25.5					20.5
VUH 07-66J		6			11.5	26					20.5
VUL 05-44J	4	4	49	11	11	22	0.5	67	12	11.5	21
VUL 05-46J		6	50		11.5	22.5					20.5
VUL 05-64J	6	4	50.5	11.5	11	22					20
VUL 05-66J		6			11.5	22.5					19.5
VUL 07-44J	4	4	55.5	11	11	25.5	0.7	67	20	23	22
VUL 07-46J		6	56.5		11.5	26					21.5
VUL 07-64J	6	4	57	11.5	11	25.5					21
VUL 07-66J		6			11.5	26					20.5
VUE 07-44J	4	4	55.5	11	11	25.5	0.7	91	10	17	22
VUE 07-46J		6	56.5		11.5	26					21.5
VUE 07-64J	6	4	57	11.5	11	25.5					20.5
VUE 07-66J		6			11.5	26					20.5

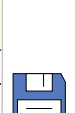
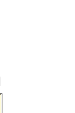


VU

Pipe Type Adapter Concentrated Exhaust

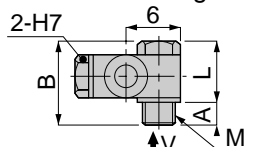


Model	Tube dia. φD	B	C	E	Nozzle dia. (mm)	Final vacuum (-KPa)	Suction flow (Nℓ/min)	Air consumption (Nℓ/min)	Mass (g)
VUH 05-4J	4	41	11	22	0.5	91	7	11.5	13.5
VUH 05-6J	6	41.5	11.5	22.5					13
VUH 07-4J	4	47.5	11	28.5	0.7	92	12.5 (12)	23	15
VUH 07-6J	6	48	11.5	29					14.5
VUL 05-4J	4	41	11	22	0.5	67	12	11.5	13.5
VUL 05-6J	6	41.5	11.5	22.5					13
VUL 07-4J	4	47.5	11	28.5					15
VUL 07-6J	6	48	11.5	29					14
VUE 07-4J	4	47.5	11	28.5	0.7	91	10	17	14.5
VUE 07-6J	6	48	11.5	29					14.5



VM

Pad Direct-Mounting Elbow



Model	M	A	B	L	Nozzle dia. (mm)	Final vacuum (-KPa)	Suction flow (Nℓ/min)	Air consumption (Nℓ/min)	Mass (g)
VMH 05-M54	M5×0.8	3.5	14.5	11	0.5	91	7	11.5	17
VMH 05-M64	M6×1	5.5	15.5	10					17.5
VML 05-M54	M5×0.8	3.5	14.5	11	0.5	67	11	11.5	17
VML 05-M64	M6×1	5.5	15.5	10					17

