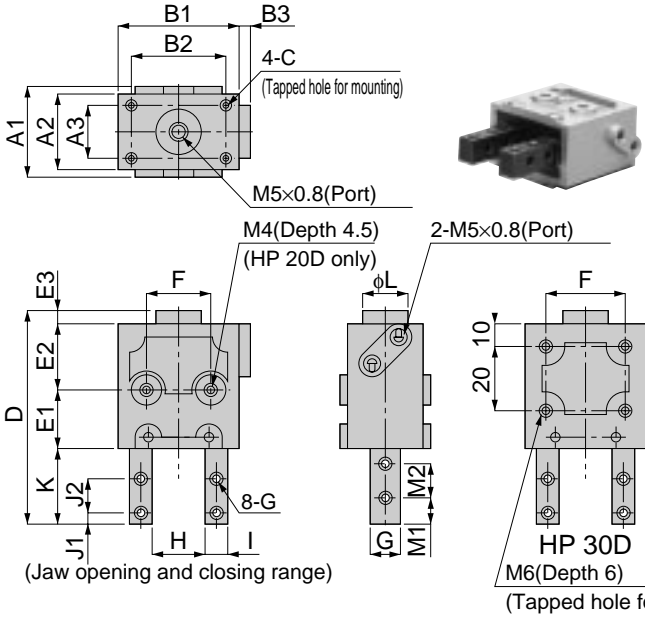


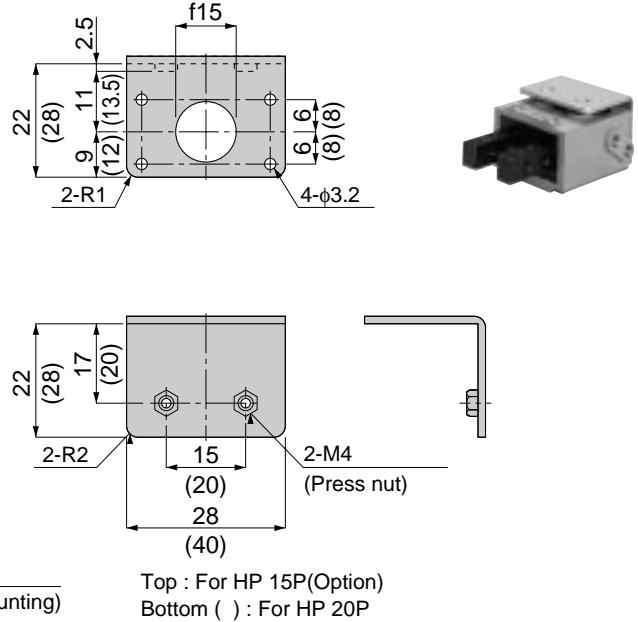
## HP 15-20-30

Parallel Type Gripper

### Main body



### Bracket

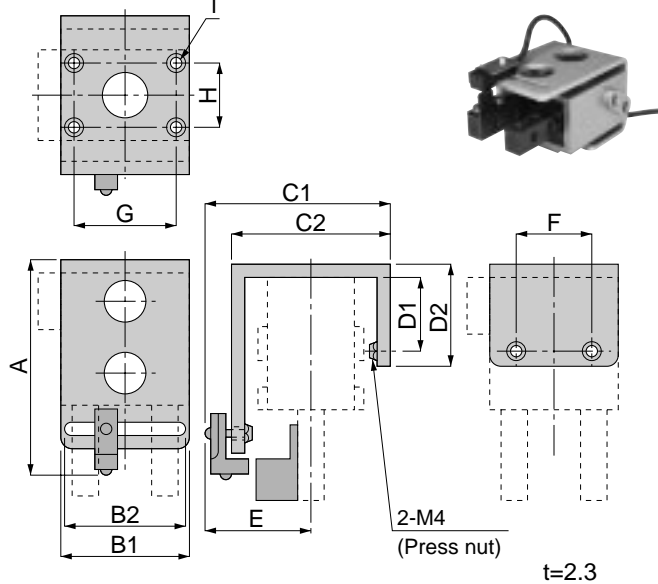


unit:mm

Model	A1	A2	A3	B1	B2	B3	C	D	E1	E2	E3	F	G	H	I	J1	J2	K	fL	M1	M2	N	Mass (g)
HP 15P	22	18	12	28.5	22	5	M3(Depth4.5)	54.5	17.5	17	4	15	M3(Through)	8~11	6 <sup>-0.05</sup> <sub>-0.10</sub>	2.5	7	16	15	6	7	8 <sup>-0.05</sup> <sub>-0.10</sub>	55
HP 20P	27	24	16	40.5	32	3	M3(Depth4.5)	67.5	20.5	20	4	20	M4(Through)	12.5~17.5	8 <sup>-0.05</sup> <sub>-0.10</sub>	4	10	23	15	9	10	10 <sup>-0.05</sup> <sub>-0.10</sub>	110
HP 20D	-	-	-	-	-	3.5	M4(Depth8)	68	20	20	4.5	20	M4(Through)	12.5~17.5	8 <sup>-0.05</sup> <sub>-0.10</sub>	4	10	23	15	9	10	10 <sup>-0.05</sup> <sub>-0.10</sub>	180
HP 30D	-	32	22	60	50	5	M6(Depth12)	95	29.5	30	4.5	32	M5(Through)	20~28	12 <sup>-0.05</sup> <sub>-0.10</sub>	6	12	31	20	12	12	14 <sup>-0.05</sup> <sub>-0.10</sub>	525

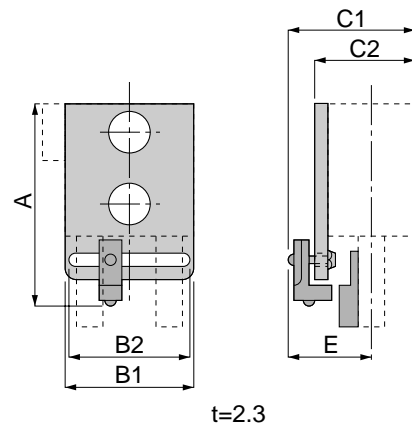
## HP 15-20

Parallel Type Gripper with Sensor 15 · 20 Type



## HP 30

Parallel Type Gripper with Sensor 30 Type



unit:mm

Model	A	B1	B2	C1	C2	D1	D2	E	F	G	H	I
HP 15P-S	51	28	20	39	32	19	24	25.5	15	22	12	4-φ3.2 φcounter sinking
HP 20P-S	67	40	32	43	36	22	27	25	20	32	16	4-φ3.2 φcounter sinking
HP 20D-S	65	-	-	36	29	-	-	-	-	-	-	-
HP 30D-S	86	60	50	41	34	-	-	28	-	-	-	-