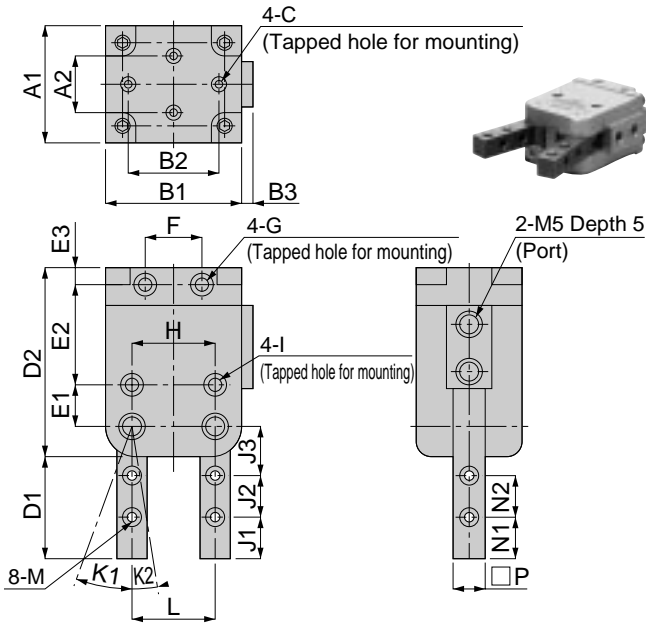


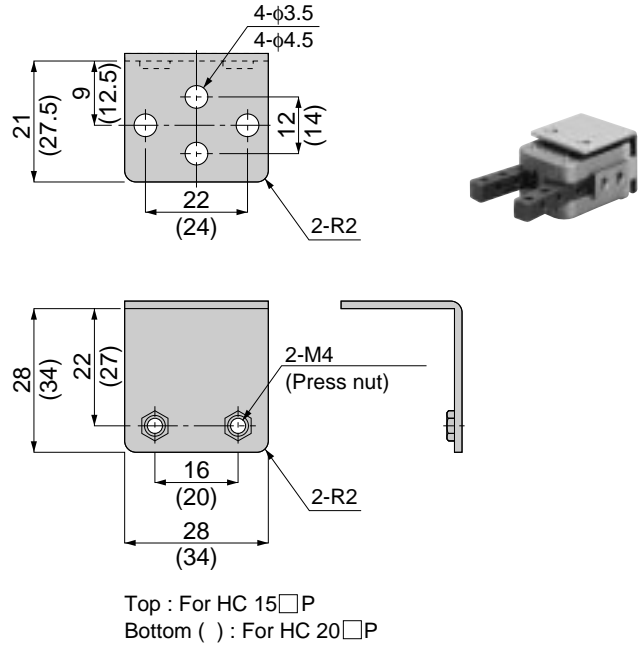
HC 15-20-30

Lever Type Gripper

Main body



Bracket

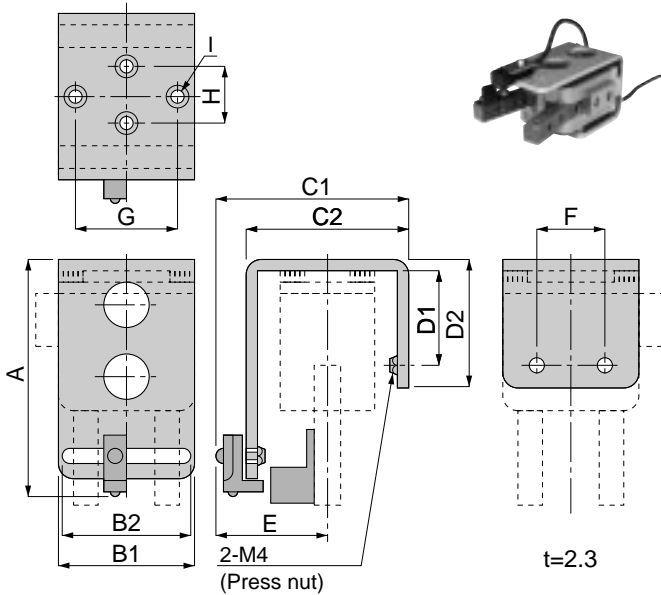


unit:mm

Model	A1	A2	B1	B2	B3	C	D1	D2	E1	E2	E3	F	G	H	I	J1	J2	J3	K1	K2	L	M	N1	N2	□P	Mass (g)
HC 15□P	19	12	28	22	5	M3(Depth5)	20	35.5	8.5	19	3	12	M3(Depth8)	16	-	3	8	14	15°	10°	16	M3(Through)	7	8	6 ^{-0.05} _{-0.10}	50
HC 20□P	25	14	34	24	3	M4(Depth6)	24.5	45	10	23.5	4	14	M4(Depth8)	20	-	5	10	17	8°	8°	23	M4(Through)	10	10	8 ^{-0.05} _{-0.10}	105
HC 20□D	24														M4(Depth15)											180
HC 30□D	32	22	52	42	2	M5(Depth6.5)	34	55	12	28	4	22	M5(Depth15)	30	M5(Depth6)	6	16	23	19°	10°	30	M6(Through)	12	16	12 ^{-0.05} _{-0.10}	450

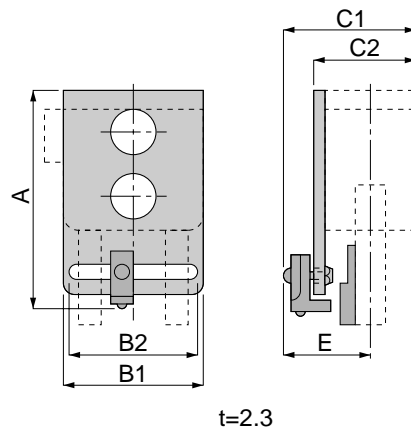
HC 15-20

Lever Type Gripper with Sensor 15-20 Type



HC 30

Lever Type Gripper with Sensor 30 Type



unit:mm

Model	A	B1	B2	C1	C2	D1	D2	E	F	G	H	I
HC 15□P-S	59	28	21	37	30	22	30	22	16	22	12	4-φ3.2 φ6 Counter sinking
HC 20□P-S	70	34	25	43	36	27	35	25	20	24	14	4-φ4.2 φ8 Counter sinking
HC 20□D-S	68			33	26	-	-					
HC 30□D-S	86	52	45	51	34	-	-	26	-	-	-	-