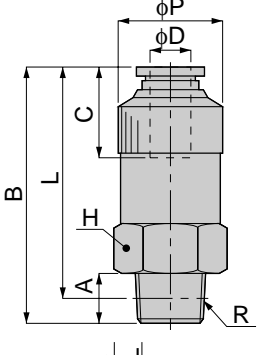


CAD **CVC**

Straight



Metric thread type

unit:mm

Model	Tube dia. φD	R	A	B	L	φP	C	H	Mass (g)	Eff. a. (mm <sup>2</sup> )
CVC 4-M5□	4	M5×0.8	3	28	25	8	11	8	6.5	2.5
CVC 4-M6□		M6×1	4	29						2.7
CVC 4-01□		R1/8	8	24	20	9	10	9.5	2.7	
CVC 6-01□	6	R1/8	8	29	25	10	12	10	9.5	6.8
CVC 6-02□		R1/4	11		23			12	14	
CVC 8-01□	8	R1/8	8	35.5	31.5	13.5	18.5	14	20	6.8
CVC 8-02□		R1/4	11	39.5	33.5				22	15.5
CVC 10-03□	10	R3/8	12	62	55.5	25	21	24	46	35
CVC 10-04□		R1/2	15	68.5	60.5	28		27	64	39
CVC 12-03□	12	R3/8	12	64.5	58	25	23.5	24	49	50
CVC 12-04□		R1/2	15	71	63	28		27	68.5	53

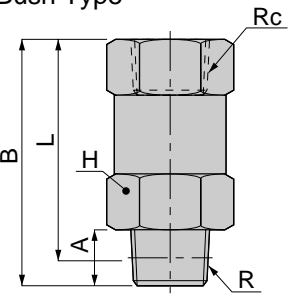


unit:inch

Model	Tube dia. φD inch(mm)	NPT	A	B	L	φP	C	H	Eff. A. mm <sup>2</sup>	Cv	Weight (oz)
CVC 5/32-U10□U	5/32(3.97)	10-32UNF	0.14	1.10	0.96	0.31	0.43	5/16	2.5	0.14	0.25
CVC 5/32-N1□U	5/32(3.97)	NPT 1/8	0.31	0.94	0.79	0.35	0.43	7/16	2.7	0.15	0.39
CVC 1/4-N1□U	1/4(6.35)	NPT 1/8	0.31	1.14	0.98	0.39	0.47	9/16	6.8	0.37	0.71
CVC 1/4-N2□U	1/4(6.35)	NPT 1/4	0.43	1.14	0.91	0.47	0.47	9/16	6.8	0.37	0.93
CVC 5/16-N1□U	5/16(7.94)	NPT 1/8	0.31	1.40	1.24	0.53	0.73	9/16	6.8	0.37	0.78
CVC 5/16-N2□U	5/16(7.94)	NPT 1/4	0.43	1.56	1.32	0.53	0.73	9/16	15.5	0.84	0.83
CVC 3/8-N3□U	3/8(9.53)	NPT 3/8	0.47	2.44	2.19	0.98	0.83	1	35	1.89	1.67
CVC 3/8-N4□U	3/8(9.53)	NPT 1/2	0.59	2.74	2.38	1.10	0.83	1 1/8	39	2.11	2.33

CAD **CVF**

Bush Type



unit:mm

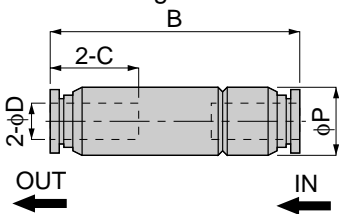
Model	R	Rc	A	B	L	H	Mass (g)	Eff. a. (mm <sup>2</sup> )
CVF 01-01□	R1/8	Rc1/8	8	26.5	22.5	14	21	6.8
CVF 02-02□	R1/4	Rc1/4	11	33	27	17	34	15.5
CVF 03-03□	R3/8	Rc3/8	12	52	45.5	24	37	52
CVF 04-04□	R1/2	Rc1/2	15	62	55.5	27	56	78

unit:inch

Model	NPT	Female	A	B	L	H	Eff. A. mm <sup>2</sup>	Cv	Weight (oz)
CVF N1-N1□U	NPT 1/8	NPT 1/8	0.31	1.04	0.89	9/16	6.8	0.37	0.77
CVF N2-N2□U	NPT 1/4	NPT 1/4	0.43	1.30	1.06	11/16	15.5	0.84	1.35
CVF N3-N3□U	NPT 3/8	NPT 3/8	0.47	2.05	1.79	1	52	2.81	1.41
CVF N4-N4□U	NPT 1/2	NPT 1/2	0.59	2.44	2.19	1 1/8	78	4.22	2.12

CAD **CVU**

Union Straight



unit:mm

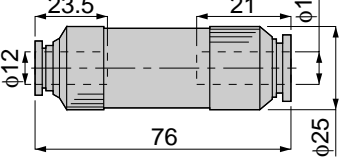
Model	Tube dia. φD	B	φP	C	Mass (g)	Eff. a. (mm <sup>2</sup> )
CVU 4-4	4	34	9	11	5	2.7
CVU 6-6	6	38.5	12	12	9.5	6.8
CVU 8-8	8	55.5	15	18.5	20	15.5
CVU 10-10	10	82.5	25	21	61.5	32
CVU 12-12	12	87.5	25	23.5	68	46

unit:inch

Model	Tube dia. φD	B	φP	C	Mass (g)	Eff. a. (mm <sup>2</sup> )
CVU 12-10A	12	87.5	25	23.5	68	46
CVU 12-10B	10	87.5	25	23.5	68	46

CAD **CVG**

Different Diam. Union Straight



unit:mm

Model	Mass (g)	Eff. a. (mm <sup>2</sup> )
CVG 12-10□	65	36

※Direction of air flow CVG 12-10A : Tube dia. φ12 → φ10  
CVG 12-10B : Tube dia. φ10 → φ12