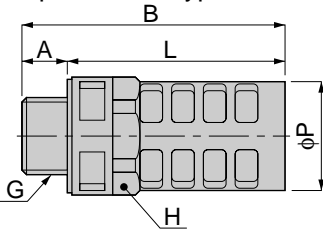


# Control Series Silencer

unit:mm

## SR

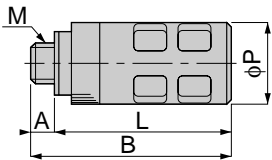
Taper thread Type



Model	G	A	B	L	φP	H	Mass (g)	Eff. a. (mm <sup>2</sup> )
SR 01	G1/8	6	28	22	15.5	-	2	11.5
SR 02	G1/4	8	38	30	17.5	-	3.5	18.4
SR 03	G3/8	10	58	48	26	24	12	70
SR 04	G1/2	12	66	54	29	27	15	95

## SM

Metric thread Type

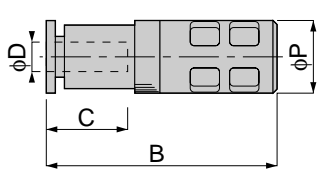


unit:mm

Model	M	A	B	L	φP	Mass (g)	Eff. a. (mm <sup>2</sup> )
SM 5	M5×0.8	3	23.5	20.5	10.5	3	3.8
SM 6	M6×1	4	24.5	20.5	10.5	3.5	4.6
SM 10	M10×1	5	20.5	15.5	15.5	6.5	9.1

## ST

Quick-Fitting Type



unit:mm

Model	Tube dia. φD	B	φP	C	Mass (g)	Eff. a. (mm <sup>2</sup> )
ST 4	4	30	10.5	11	5.5	4.6
ST 6	6	34.5	15.5	11.5	3	11.5
ST 8	8	48.5	17.5	17.5	6.5	18.4