

⚠ Detailed Safety Instructions

Before using the PISCO device, be sure to read the "Safety Instructions", "Common Safety Instructions for Products Listed in This Manual" on page 23~24 and "Common Safety Instructions for Quick-Fitting Joint" on page 29~31.

⚠ Warning

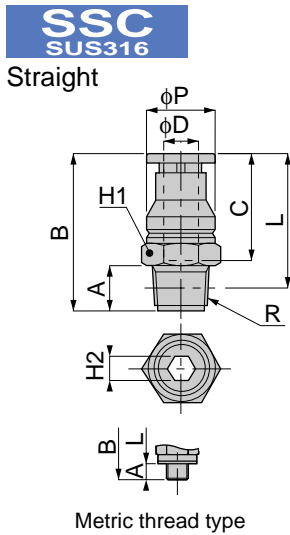
1. When the fluid admitted is a chemical, be sure to contact PISCO for guidance. Depending on usage, damage may be caused to the joint body, the tube may come off or leakage may result.
2. When the fluid admitted is a liquid, use an insert ring. Without the use of an insert ring, the tube may come off or leakage may occur.
3. After connecting the tube, be sure to pull the tube toward you and make certain that it does not come off. If the tube comes off, pull the collet once(see table below), connect the tube again and check for proper connection by pulling it again.

● Table

Table dia.	Tensile force of collet
φ4	10~20N(2.25~4.50lbf)
φ6	40~60N(8.99~13.49lbf)
φ8	50~70N(11.24~15.74lbf)
φ10	60~70N(13.49~15.74lbf)
φ12	70~90N(15.74~20.23lbf)
φ16	60~80N(13.49~17.98lbf)

⚠ Caution

1. Note that the taper pipe thread is not Sealock-treated. When you use seal tape or sealant on the thread, apply the tape or sealant about 1.5 or 2 thread ridges away from the thread end.



unit:mm

Model	Tube dia. φD	R	A	B		L		φP	C		H1	H2	Mass (g)	Orifice (φmm)	Eff. a. (mm ²)
				min	max	min	max		min	max					
SSC 4-M5	4	M5×0.8	3	24	24.5	21	21.5	10	17.5	18	10	2	6	2	3
SSC 4-01		R1/8	8	26.5	27	22.5	23					3	8	3	5
SSC 6-M5	6	M5×0.8	3	25	26.5	22	23.5	12	18.5	20	12	2	8	2.1	3
SSC 6-01		R1/8	8	26.5	28	22.5	24					4	9.5	4.2	13.5
SSC 6-02		R1/4	11	31.5	33	25.5	27					18.5	13.8	13.8	
SSC 8-01	8	R1/8	8	29.5	31	25.5	27	14	20.5	22	14	5	12.5	5.3	20.5
SSC 8-02		R1/4	11	32.5	34	26.5	28					6	17	6.3	26.8
SSC 10-02	10	R1/4	11	35.5	37	29.5	31	17	24	25.5	17	6	22	6.3	27.5
SSC 10-03		R3/8	12	36.5	38	30	31.5					30	6.3	28.5	
SSC 12-03	12	R3/8	12	38	40	32	33.5	20	25.5	27.5	21	8	36.5	8.5	45.5
SSC 12-04		R1/2	15	41	43	33	35					22	53	51.8	
SSC 16-04	16	R1/2	15	49	51	41	43	23.5	31	33	24	12	58.5	12.6	79.8

