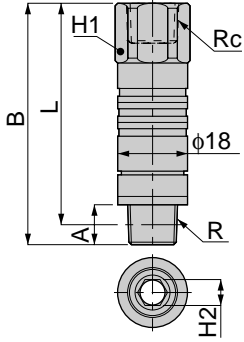


Tube Fitting Series Die Temperature Control Fitting

ASC

Female Straight
Stop Valve Built-in



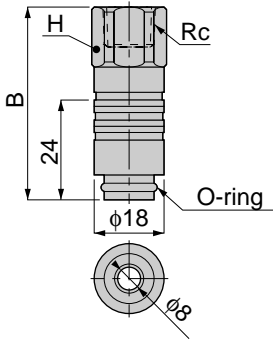
unit:mm

Model	Rc	R	A	B	L	H1	H2	Mass (g)	Orifice (φmm)	Eff.a.(cv) (mm ²)
ASC 10-01F01	Rc1/8	R1/8	8	53	49	19	5	72.5	5.3	18.4(0.98)
ASC 10-01F02		R1/4	11		47		6	72	6.3	25.9 (1.14)
ASC 10-01F03		R3/8	12		46.5		78.5			
ASC 10-02F01	Rc1/4	R1/8	8	60	56	19	5	81.5	5.3	18.3(1.43)
ASC 10-02F02		R1/4	11		54		6	81	6.3	25.9 (1.73)
ASC 10-02F03		R3/8	12		53.5			87		
ASC 10-03F01	Rc3/8	R1/8	8	62	58	21	5	85	5.3	18.4(1.48)
ASC 10-03F02		R1/4	11		56		6	84.5	6.3	25.9 (1.84)
ASC 10-03F03		R3/8	12		55.5			90.5		



ASC PARTS

Internally threaded
part only
Stop Valve Built-in



unit:mm

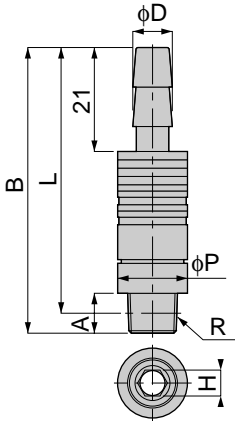
Model	Rc	B	H	Mass (g)	Orifice (φmm)
ASC 10-01FP	Rc1/8	40.5	19	53.5	8.1
ASC 10-02FP	Rc1/4	47.5	19	62.5	8.1
ASC 10-03FP	Rc3/8	49.5	21	66	8.1

※Use quick-joint type AS for threaded part. AK(threaded part only) is not interchangeable.



AKC

Straight for Hose



unit:mm

Model	Heat-resistant Hose(I.D.)(φ)	φD	R	A	B	L	φP	H	Mass (g)	Orifice (φmm)	Eff.a.(cv) (mm ²)
AKC 08-ID06B01	6.3	8	R1/8	8	56	52	15	5	38	4.5	13.6 (0.9)
AKC 08-ID06B02			R1/4	11	57.5	51.5		6	41		
AKC 08-ID09B01	9.5	12	R1/8	8	56	52	15	5	42	5.3	19.5(1.39)
AKC 08-ID09B02			R1/4	11	57.5	51.5		6	45.5		
AKC 10-ID06B01	6.3	8	R1/8	8	61.5	57.5	18	5	61	4.5	13.5(0.91)
AKC 10-ID06B02			R1/4	11	63.5			61.5	8		
AKC 10-ID06B03			R3/8	12	57	68					
AKC 10-ID06B04			R1/2	15	66.5	58.5		22			
AKC 10-ID09B01	9.5	12	R1/8	8	61.5	57.5	18	5	60.5	4.5	18.8(1.41)
AKC 10-ID09B02			R1/4	11	63.5			61	8		
AKC 10-ID09B03			R3/8	12	57	67.5					
AKC 10-ID09B04			R1/2	15	66.5	58.5		22			

