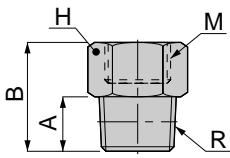


## MBA

Bush A

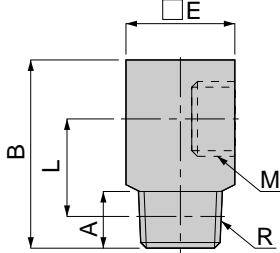


unit:mm

Model	R	M	A	B	H	Mass (g)	Orifice (φmm)	Eff. a. (mm <sup>2</sup> )
MBA 0801	R1/8	M8×1	8	20	12	11	6	24.5
MBA 1201	R1/8	M12×1	8	20	17	16	6	24.7
MBA 1202	R1/4		11	23		20	9	42.3
MBA 1203	R3/8		12	24		28	10	42.3
MBA 1402	R1/4	M14×1	11	23	19	24	9	42.7
MBA 1403	R3/8		12	24		30	12	56.1
MBA 1404	R1/2		13	25		47	13	56.1
MBA 1803	R3/8	M18×1	12	25	22	30	12	56.1
MBA 1804	R1/2		13		24	47	13	

## MLB

Elbow B

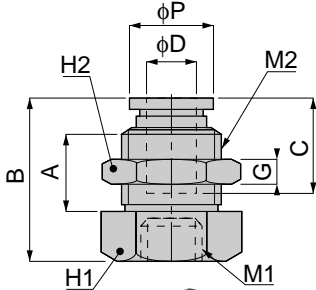


unit:mm

Model	R	M	A	B	L	E	Mass (g)	Orifice (φmm)	Eff. a. (mm <sup>2</sup> )	
MLB 0801	R1/8	M8×1	8	28	16	17	40	6	21.4	
MLB 1201	R1/8	M12×1	8	29	15	19	46.5	6	24.5	
MLB 1202	R1/4		11	32			48.5	9	40	
MLB 1402	R1/4	M14×1	11	37	19	22	79	9	42.7	
MLB 1403	R3/8		12	38			19.5	81	12	46
MLB 1404	R1/2		13	39			19	90.5	13	
MLB 1803	R3/8	M18×1	12	44	23.5	27	142	12	49	
MLB 1804	R1/2		13	45			23	156		13

## MKR

Bulkhead Reducer

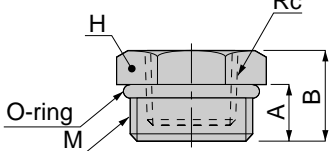


unit:mm

Model	Tube dia. φD	M1	M2	A	B	φP	C	G	H1	H2	Mass (g)	Orifice (φmm)	Eff. a. (mm <sup>2</sup> )
MKR 0804	4	M8×1	M12×1	12	26.5	10	15	4	14	14	18.5	3	5.6
MKR 0806	6		M14×1	13	28.5	12	17		17	17	36	5	11.5
MKR 1206	6	M12×1	M14×1	10	28.5	12	17	4	17	17	27.5	5	13.2
MKR 1208	8		M16×1	12	29	14	18		19	19	34.5	7	27.4
MKR 1210	10		M20×1	15	32.5	17	20		5	22	24	59	9
MKR 1408	8	M14×1	M16×1	10	29	14	18	4	19	19	33	7	27.7
MKR 1410	10		M20×1	15	32.5	17	20		5	24	62	9	41.7
MKR 1412	12		M22×1	16	35	21	23.5		6	27	77	11	54.7
MKR 1812	12	M18×1	M22×1	16	35	21	23.5	6	27	27	81.5	11	66.7

## MBC

Bush C



unit:mm

Model	Rc	M	A	B	H	Mass (g)
MBC 08M5	M8×1	M8×1	7	11	10	4
MBC 12M6	M6×1	M12×1	7.5	11.5	14	9.5
MBC 1401	Rc1/8	M14×1	8	12	17	12
MBC 1802	Rc1/4	M18×1	8	13	19	16