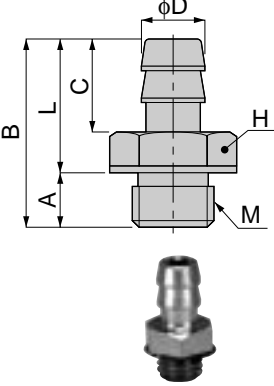


Tube Fitting Series Minimal Fitting

unit:mm

LC

Minimal Straight

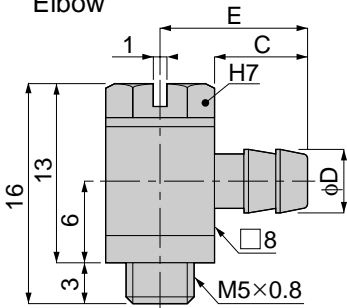


Model	Tube dia. φD	M	A	B	L	C	H	Mass (g)	Orifice (φmm)	Eff. a. (mm ²)
LC-0320-M3	2	M3×0.5	2.5	11	8.5	6	5.5	1.5	1.2	1.7
LC-0320-M5		M5×0.8	3	11.5			7			
LC-0425-M3	2.5	M3×0.5	2.5	12	9.5	7	5.5	2.5	1.6	1.7
LC-0425-M5		M5×0.8	3	13			7			
LC-0425-M6		M6×1	4	14			8			
LC-0530-M5	3	M5×0.8	3	13	10	7	7	1.5	1.8	2
LC-0640-M3	4	M3×0.5	2.5	12.5	10	7	5.5	1.5	2.4	3.6
LC-0640-M5		M5×0.8	3	13			7			
LC-0640-M6		M6×1	4	14			8			

unit:mm

LH

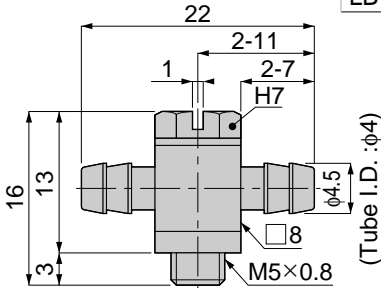
Minimal Universal Elbow



Model	Tube dia. φD	C	E	Mass (g)	Orifice (φmm)	Eff. a. (mm ²)
LH-0320-M5	2	6	10	5.5	1.2	1.2
LH-0425-M5	2.5	7	11	5.5	1.6	1.2
LH-0640-M5	4	7	11	6	2.4	1.5

LB

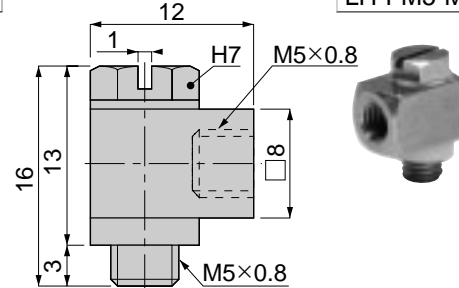
Minimal Tee



Model	Mass (g)	Orifice (φmm)	Eff. a. (mm ²)
LB-0640-M5	6.5	2	1.7

LH

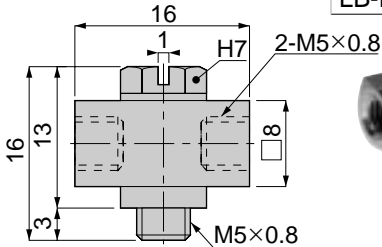
Universal Elbow



Model	Mass (g)	Orifice (φmm)
LH-FM5-M5	6.5	1.8

LB

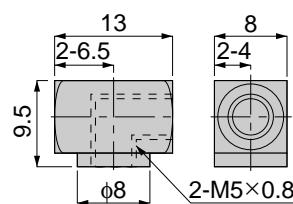
Universal Tee



Model	Mass (g)	Orifice (φmm)
LB-FM5-M5	7.5	1.8

LL

Union Elbow



Model	Mass (g)
LL-FM5	5.5