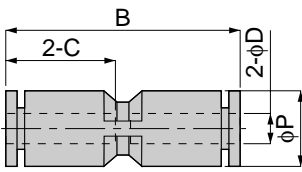


Tube Fitting Series EG

PU EG

Union Straight

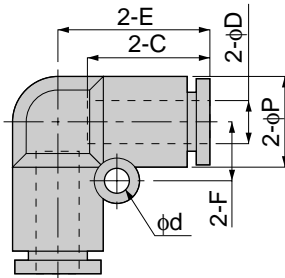


Model	Tube dia. ϕD	B	ϕP	C	Mass (g)	Orifice (ϕ mm)	Eff. a. (mm^2)
PU 4EG	4	31	10	15	4	3.8	5.3
PU 6EG	6	35	13	17	6.5	5.5	12.5

unit:mm

PV EG

Union Elbow

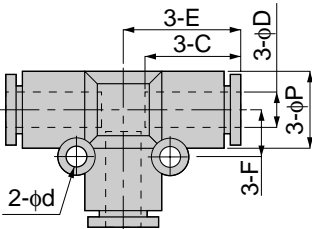


Model	Tube dia. ϕD	ϕP	C	E	ϕd	F	Mass (g)	Orifice (ϕ mm)	Eff. a. (mm^2)
PV 4EG	4	10.5	15	17	-	-	5	2.8	4.2
PV 6EG	6	13	17	20.5	3	8	7.5	5	10

unit:mm

PE EG

Union Tee



Model	Tube dia. ϕD	ϕP	C	E	ϕd	F	Mass (g)	Orifice (ϕ mm)	Eff. a. (mm^2)
PE 4EG	4	10	15	17	-	-	7.5	3	5.3
PE 6EG	6	13	17	20	3	8	11	4.6	12.5

unit:mm