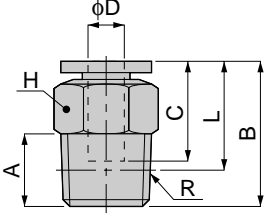


PC
MINI TYPE

Straight



Metric thread type



unit:mm

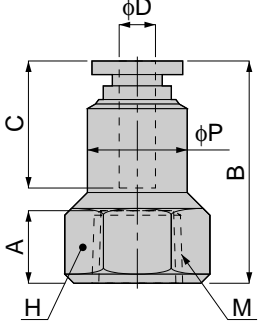
Model	Tube dia. φD	R	A	B	L	C	H	Mass (g)	Orifice (φmm)	Eff. a. (mm ²)
PC 3-M3M	3	M3×0.5	2.5	13	10.5	9.5	5.5	1	1.2	0.7
PC 3-M5M		M5×0.8	3	15.5	12.5	11	8	4	2	3
PC 3-M6M		M6×1	4	16.5						
PC 4-M3M	4	M3×0.5	2.5	15	12.5	11	8	2	1.2	0.9
PC 4-M5M		M5×0.8	3	16						
PC 4-M6M		M6×1	4	16.5				2.5	6.3	6.4
PC 4-01M		R1/8	8	16						
PC 6-M5M	6	M5×0.8	3	17	14	11.5	10	5	2.4	3.6
PC 6-M6M		M6×1	4	18						
PC 6-01M		R1/8	8	18	14	6	4.6	15.9		
PC 1/8-M3M	1/8	M3×0.5	2.5	15	12.5	11	8	2	1.2	0.9
PC 1/8-M5M		M5×0.8	3	16						
PC 1/8-M6M		M6×1	4	16.5				2.5	2.9	2.7
PC 1/8-01M		R1/8	8	16						

unit:inch

MODEL	Tube dia. φ D	NPT	A	B	L	C	H	Weight (g)	Orifice φ MM	Eff.a. mm ²	Cv
PC 1/8-U10MU	1/8	10-32UNF	0.14	0.63	0.49	0.43	5/16	3.1	2.4	2.6	0.14
PC 1/8-N0MU	1/8	1/16-27NPT	0.31	0.71	0.55	0.43	7/16	7.3	2.5	2.7	0.15
PC 1/8-N1MU	1/8	1/8-27NPT	0.31	0.63	0.47	0.43	7/16	7.4	2.5	2.7	0.15
PC 5/32-U10MU	5/32	10-32UNF	0.14	0.63	0.49	0.43	5/16	3.1	2.4	3.8	0.21
PC 5/32-N0MU	5/32	1/16-27NPT	0.31	0.71	0.55	0.43	7/16	7.2	2.5	6.4	0.35
PC 5/32-N1MU	5/32	1/8-27NPT	0.31	0.63	0.47	0.43	7/16	7.4	2.5	6.4	0.35

PCF
MINI TYPE

Female Straight



unit:mm

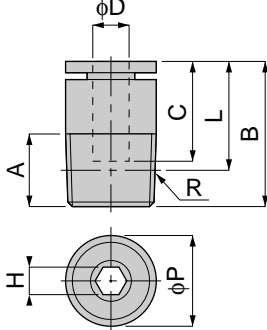
Model	Tube dia. φD	M	A	B	φP	C	H	Mass (g)	Orifice (φmm)	Eff. a. (mm ²)
PCF 3-M3M	3	M3×0.5	3	13	5.5	9.5	5.5	1.5	3	1.4
PCF 3-M5M		M5×0.8	5	15	8		8	4	2	2.8
PCF 4-M3M	4	M3×0.5	3	14	8	11	8	3	3	3.5
PCF 4-M5M		M5×0.8	5	17				4	2	2.6
PCF 1/8-M3M	1/8	M3×0.5	3	14	8	11	8	3	3	3.5
PCF 1/8-M5M		M5×0.8	5	17				4	2	2.6

unit:inch

MODEL	Tube dia. φ D	NPT	A	B	φ P	C	H	Weight (g)	Orifice φ MM	Eff.a. mm ²	Cv
PCF 1/8-U10MU	1/8	10-32UNF	0.14	0.69	0.31	0.43	5/16	4.3	2.0	2.6	0.14
PCF 5/32-U10MU	5/32	10-32UNF	0.14	0.69	0.31	0.43	5/16	4.1	2.0	2.6	0.14

POC
MINI TYPE

Hex. -Holed Straight



Metric thread type



unit:mm

Model	Tube dia. φD	R	A	B	L	φP	C	H	Mass (g)	Orifice (φmm)	Eff. a. (mm ²)
POC 3-M3M	3	M3×0.5	2.5	15.5	13	8	11	1.5	3	1.5	1.9
POC 3-M5M		M5×0.8	3	15.5	12.5			2		2.2	2.8
POC 4-M3M	4	M3×0.5	2.5	15.5	13.5	8	11	1.5	3	1.5	1.8
POC 4-M5M		M5×0.8	3	16	13			2.5		4	2.6
POC 4-M6M		M6×1	4	16.5					3		6
POC 4-01M		R1/8	8	15.5	11.5			10		11.5	
POC 6-M5M	6	M5×0.8	3	17.5	14.5	10	11.5	2.5	5	2.6	5.2
POC 6-M6M		M6×1	4	18	14			3		3.1	7.1
POC 6-01M		R1/8	8	17.5	13.5			12	4	6	4.2
POC 1/8-M3M	1/8	M3×0.5	2.5	15.5	13	8	11	1.5	3	1.5	1.8
POC 1/8-M5M		M5×0.8	3	16	12.5			2.5		4	2.6
POC 1/8-M6M		M6×1	4	16.5	13			3	4	3.1	3.1

unit:inch

MODEL	Tube dia. φ D	NPT	A	B	L	φ P	C	H	Weight (g)	Orifice φ MM	Eff.a. mm ²	Cv
POC 1/8-U10MU	1/8	10-32UNF	0.14	0.63	0.49	0.31	0.43	3/32	3.1	2.5	3.2	0.17
POC 5/32-U10MU	5/32	10-32UNF	0.14	0.63	0.49	0.31	0.43	3/32	3.0	2.5	4.8	0.26
POC 5/32-N1MU	5/32	1/8	0.31	0.63	0.47	0.39	0.43	3/32	6.6	2.5	4.7	0.25