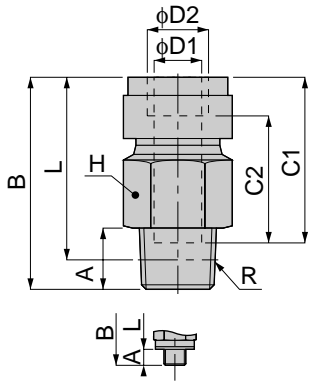


Tube Fitting Series Spatter

unit:mm

PC SPATTER

Straight



Metric thread type



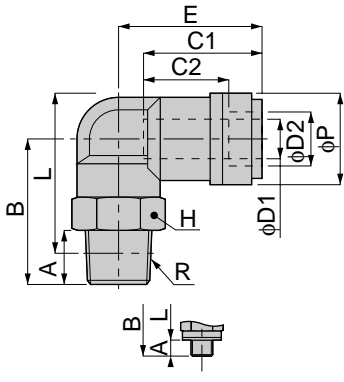
Model	Tube dia. φD1	Tube dia. φD2	R	A	B	L	C1	C2	H	Mass (g)	Orifice (φmm)	Eff. a. (mm ²)	
PC 4-M5 V-0	4	6	M5×0.8	3	25	21.5	20	15.5	10	7.5	1.8	1.9	
PC 4-M50 V-0			M5×0.8		27.5	22.5			8				
PC 4-M6 V-0			M6×1	4	26	21.5			10		9.5	3	6.2
PC 4-01 V-0			R1/8			22							
PC 4-02 V-0	R1/4	11	20	14	17	4.6	12.5						
PC 6-01 V-0	R1/8	8	27	23	12			10					
PC 6-02 V-0	R1/4	11	29.5	25.5	14			18					
PC 6-03 V-0	R3/8	12	28.5	22	17			28					
PC 8-01 V-0	8	10	R1/8	8	32.5	27	22.5	17.5	14	16.5	6	20	
PC 8-02 V-0			R1/4	11	31	25			17		25		7
PC 8-03 V-0			R3/8	12	28.5	22			17		25		
PC 10-01 V-0	10	12	R1/8	8	35	31	25	20	17	24	6	22.9	
PC 10-02 V-0			R1/4	11	34	28				21.5	8.5	35	
PC 10-03 V-0			R3/8	12	33.5	27.5				27.5			
PC 10-04 V-0			R1/2	15	34.5	26				21	50.5		
PC 12-02 V-0	12	14	R1/4	11	41	35	28.5	23.5	21	44	8.5	35	
PC 12-03 V-0			R3/8	12	37	30.5				45	11	59	
PC 12-04 V-0			R1/2	15	39	31				68			



1

PL SPATTER

Elbow



Metric thread type



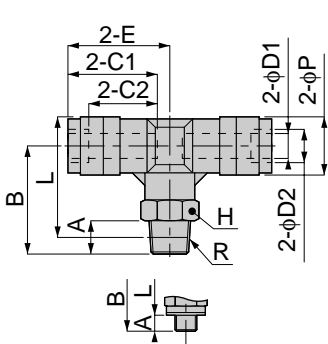
Model	Tube dia. φD1	Tube dia. φD2	R	A	B	L	φP	C1	C2	E	H	Mass (g)	Orifice (φmm)	Eff. a. (mm ²)	
PL 4-M5 V-0	4	6	M5×0.8	3	20.5	23	12	20	15.5	23	10	10	1.8	1.5	
PL 4-M6 V-0			M6×1	4	21.5							10.5			
PL 4-01 V-0			R1/8	8	23.5	25.5						13	3	4.2	
PL 4-02 V-0			R1/4	11	26.5	26.5						18.5			14
PL 6-01 V-0	6	8	R1/8	8	25	28	14	21.5	16.5	24.5	14	15	4.6	10	
PL 6-02 V-0			R1/4	11	28	29						14			24
PL 6-03 V-0			R3/8	12	30	30.5						17			35.5
PL 8-01 V-0	8	10	R1/8	8	28	32	16	22.5	17.5	27.5	14	19.5	6	16.5	
PL 8-02 V-0			R1/4	11	31	33						25			
PL 8-03 V-0			R3/8	12	33	34.5						17			37.5
PL 10-01 V-0	10	12	R1/8	8	29	42.5	19	25	20	28.5	17	32	6	22.4	
PL 10-02 V-0			R1/4	11	36	39.5						35	8	30	
PL 10-03 V-0			R3/8	12	37	40						44			
PL 10-04 V-0			R1/2	15	40	41.5						21	65		
PL 12-02 V-0	12	14	R1/4	11	38	43	22	28.5	23.5	31	21	52	8	30	
PL 12-03 V-0			R3/8	12	39	43.5						53.5	10	47	
PL 12-04 V-0			R1/2	15	42	45						76.5			



1

PB SPATTER

Tee



Metric thread type



Model	Tube dia. φD1	Tube dia. φD2	R	A	B	L	φP	C1	C2	E	H	Mass (g)	Orifice (φmm)	Eff. a. (mm ²)		
PB 4-M5 V-0	4	6	M5×0.8	3	20.5	23	12	20	15.5	22	10	12.5	1.8	1.5		
PB 4-M6 V-0			M6×1	4	21.5							15				
PB 4-01 V-0			R1/8	8	23.5	25.5						3	4.1			
PB 4-02 V-0			R1/4	11	26.5	26.5								14	25	
PB 6-01 V-0	6	8	R1/8	8	25	27	14	21.5	16.5	24.5	14	19	5	10		
PB 6-02 V-0			R1/4	11	28	29						14			28	
PB 6-03 V-0			R3/8	12	30	30.5						17			39.5	
PB 8-01 V-0	8	10	R1/8	8	28	32	16	22.5	17.5	27.5	14	24.5	6	16.5		
PB 8-02 V-0			R1/4	11	31	33						30				
PB 8-03 V-0			R3/8	12	33	34.5						17			42.5	
PB 10-02 V-0	10	12	R1/4	11	36	39.5	19	25	20	28.5	17	43	8	30		
PB 10-03 V-0			R3/8	12	37	40						52				
PB 10-04 V-0			R1/2	15	40	41.5						21			73	
PB 12-02 V-0	12	14	R1/4	11	38	43	22	28.5	23.5	31	21	64	8	30		
PB 12-03 V-0			R3/8	12	39	43.5						65.5			10	47
PB 12-04 V-0			R1/2	15	42	45						88.5				



1