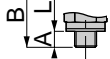
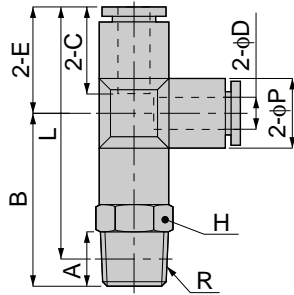


# Tube Fitting Series SUS303 Type

**New**  
**SPD**  
SUS303

Branch Tee



Metric thread type

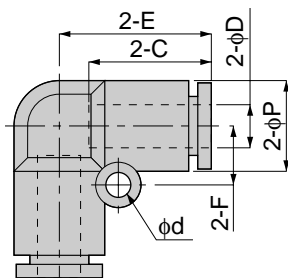


unit:mm

Model	Tube dia. $\phi D$	R	A	B	L	$\phi P$	C	E	H	Mass (g)	Orifice ( $\phi$ mm)	Eff. a. ( $\text{mm}^2$ )
SPD 4-M5	4	M5×0.8	3	20.5	35	10	15	17	10	11.5	1.8	1.9
SPD 4-M6		M6×1	4	21.5						16		
SPD 4-01		R1/8	8	24.5	37.5				14.5	3	5.3	
SPD 4-02		R1/4	11	27.5					23.5			
SPD 6-M5	6	M5×0.8	3	23	40.5	13	17	20	12	15.5	1.8	1.9
SPD 6-M6		M6×1	4	24						16		
SPD 6-01		R1/8	8	26	42				17			
SPD 6-02		R1/4	11	29	43				14	26	4.6	12.5
SPD 6-03		R3/8	12	31	44.5				17	38.5		
SPD 8-01		8	R1/8	8	28.5				46	15	18	22
SPD 8-02	R1/4		11	31.5	47	28.5						
SPD 8-03	R3/8		12	33	48.5	41						
SPD 10-01	10	R1/8	8	33	54.5	17.5	20	25.5	17	41	8	35
SPD 10-02		R1/4	11	36	55.5					41.5		
SPD 10-03		R3/8	12	37	56				50.5			
SPD 10-04		R1/2	15	40	57.5				72			
SPD 12-02	12	R1/4	11	38	60	21	23.5	28	21	61	8	35
SPD 12-03		R3/8	12	39	60.5				62.5	10		
SPD 12-04		R1/2	15	42	62				77.5			
SPD 16-03	16	R3/8	12	47	74	25	24	33.5	22	89.5	11	79.5
SPD 16-04		R1/2	15	51	74.5				99	13	92.8	

**New**  
**SPV**  
SUS303

Union Elbow

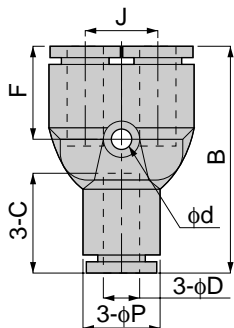


unit:mm

Model	Tube dia. $\phi D$	$\phi P$	C	E	$\phi d$	F	Mass (g)	Orifice ( $\phi$ mm)	Eff. a. ( $\text{mm}^2$ )
SPV 4	4	10	15	17	-	-	5	2.8	4.2
SPV 6	6	12.5	17	20.5	3.2	8	7.5	5	10
SPV 8	8	15	18	22	4.2	10	10	7	16.5
SPV 10	10	17.5	20	26	4.2	12	17	9	30
SPV 12	12	21	23.5	29	4.2	14	24.5	11	47
SPV 16	16	25	24	33	4.2	12	30	13	91.6

**New**  
**SPY**  
SUS303

Union Y



unit:mm

Model	Tube dia. $\phi D$	B	$\phi P$	C	J	$\phi d$	F	Mass (g)	Orifice ( $\phi$ mm)	Eff. a. ( $\text{mm}^2$ )
SPY 4	4	33.5	10	15	11	3.2	14.5	8	3	4.2
SPY 6	6	38	13	17	12	3.2	16	10.5	4.6	10
SPY 8	8	43	15	18.5	14	3.2	17.5	15.5	6	16.5
SPY 10	10	49	18	20.5	18	4.5	20	25.5	7.5	27
SPY 12	12	55	21.5	23.5	20	4.5	22.5	37	9	38
SPY 16	16	63	25	24.5	24	4.5	22.5	44	13	56.5