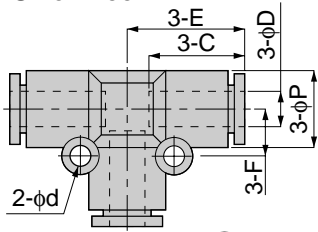


# Tube Fitting Series SUS303 Type

unit:mm

## SPE SUS303

Union Tee

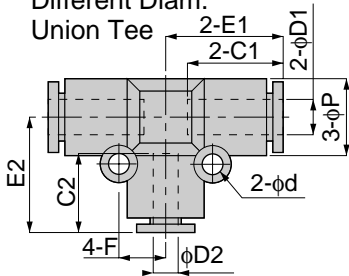


Model	Tube dia. $\phi D$	$\phi P$	C	E	$\phi d$	F	Mass (g)	Orifice ( $\phi mm$ )	Eff. a. ( $mm^2$ )
SPE 4	4	10	15	17	-	-	7	3	5.3
SPE 6	6	13	17	20	3.2	8	10.5	4.6	12.5
SPE 8	8	15	18	22	3.2	9	15.5	6	20
SPE 10	10	18	20	25.5	4.2	12	25.5	8	35
SPE 12	12	21.5	23.5	28	4.2	14	36	10	59
SPE 16	16	25.5	24	33	4.2	12	43.5	13	89.8

New

## SPEG SUS303

Different Diam.  
Union Tee

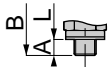
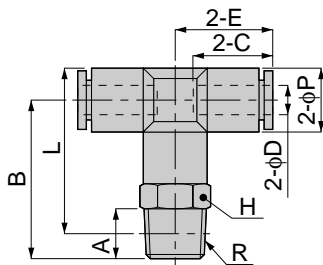


Model	Tube dia. $\phi D1$	Tube dia. $\phi D2$	$\phi P$	C1	C2	E1	E2	$\phi d$	F	Mass (g)	Orifice ( $\phi mm$ )	Eff. a. ( $mm^2$ )
SPEG 6-4	6	4	13	17	15	20.5	20	3.2	8	11	3	4.1
SPEG 8-6	8	6	15	18.5	18.5	22.5	20.5	3.2	9	15	5	10.3
SPEG 10-8	10	8	17.5	20.5	20.5	25.5	25	4.2	12	24	7	19.6
SPEG 12-10	12	10	21	23.5	23.5	29.5	29.5	4.2	14	35	9	32.5

unit:mm

## SPB SUS303

Tee



Metric thread type



Model	Tube dia. $\phi D$	R	A	B	L	$\phi P$	C	E	H	Mass (g)	Orifice ( $\phi mm$ )	Eff. a. ( $mm^2$ )				
SPB 4-M5	4	M5×0.8	3	20.5	23	10	15	17	10	11.5	1.8	1.5				
SPB 4-M6		M6×1	4	21.5												
SPB 4-01		R1/8	8	23.5							24.5	14	24	3	4.1	
SPB 4-02		R1/4	11	26.5							26.5					
SPB 6-M5	6	M5×0.8	3	23	27	13	17	20.5	12	15.5	1.8	1.5				
SPB 6-M6		M6×1	4	24												
SPB 6-01		R1/8	8	26							28.5	14	25.5	4.6	10	
SPB 6-02		R1/4	11	29							29.5					
SPB 6-03	R3/8	12	31	31	17	38.5										
SPB 8-01	8	R1/8	8	26.5	30	15	18	22.5	14	22.5	6	16.5				
SPB 8-02		R1/4	11	29.5	31								17	41	8	30
SPB 8-03		R3/8	12	31.5	32.5											
SPB 10-01	10	R1/8	8	33	37.5	17.5	20	25.5	17	41	8	30				
SPB 10-02		R1/4	11	36	38.5								21	72.5	10	47
SPB 10-03		R3/8	12	37	39											
SPB 10-04		R1/2	15	40	40.5											
SPB 12-02	12	R1/4	11	38	42.5	21	23.5	28	21	61.5	8	30				
SPB 12-03		R3/8	12	39	43								77	10	47	
SPB 12-04		R1/2	15	42	44.5											
SPB 16-03	16	R3/8	12	47	53	25	25	33.5	22	95	11	80.1				
SPB 16-04		R1/2	15	51	55.5								99	13	90.8	