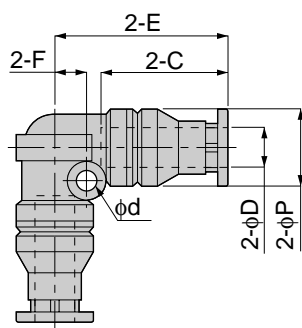


Tube Fitting Series SUS316 Type

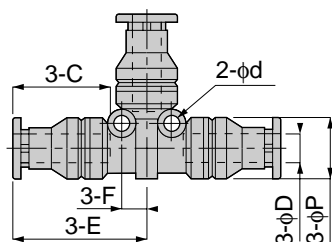
SSV SUS316 Union Elbow



Model	Tube dia. φD	φP	C		E		φd	F	Mass (g)	Orifice (φmm)	Eff. a. (mm ²)
			min	max	min	max					
SSV 4	4	10	17.5	18	23.5	24	3.2	4	12.5	2.5	3.5
SSV 6	6	12	18.5	20	26	27.5	3.2	5	19.5	4.6	9.5
SSV 8	8	14	20.5	22	29.5	31	4.2	6	28.5	6	20.8
SSV 10	10	17	24	25.5	33.5	35	4.2	7	40.5	8	29.5
SSV 12	12	20	25.5	27.5	36	38	4.2	8	57.5	10	48
SSV 16	16	23.5	31	33	43.5	45.5	4.2	9.5	91	13	69.5



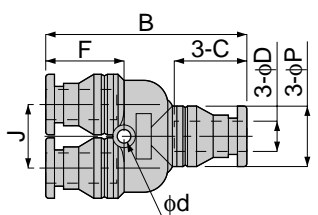
SSE SUS316 Union Tee



Model	Tube dia. φD	φP	C		E		φd	F	Mass (g)	Orifice (φmm)	Eff. a. (mm ²)
			min	max	min	max					
SSE 4	4	10	17.5	18	23.5	24	3.2	4	18	2.5	3.5
SSE 6	6	12	18.5	20	26	27.5	3.2	5	27.5	4.6	9.8
SSE 8	8	14	20.5	22	29.5	31	4.2	6	39	6	20
SSE 10	10	17	24	25.5	33.5	35	4.2	7	57	8	28.8
SSE 12	12	20	25.5	27.5	36	38	4.2	8	79	10	50
SSE 16	16	23.5	31	33	43.5	45.5	4.2	9.5	124	13	74



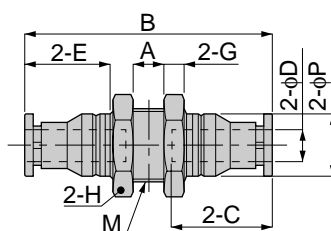
New SSY SUS316 Union Y



Model	Tube dia. φD	B		φP	C		J	φd	F		Mass (g)	Orifice (φmm)	Eff. a. (mm ²)
		min	max		min	max			min	max			
SSY 4	4	38	40	10	17	18	11	3.2	17	18	15	5	3
SSY 6	6	41	44	12	18	19.5	13	3.2	17	18.5	23.5	12.4	8.5
SSY 8	8	48	51	14	20.5	22	15	3.2	19.5	21	34	34.2	19
SSY 10	10	55	58	17	23.5	25	18	4.3	21.5	23.5	51.5	39	24.8
SSY 12	12	60	64	20	25	27	21	4.3	23	24	79	66.6	38.5
SSY 16	16	74	79	23.5	30.5	33	25	4.3	28	30.5	121	117	53



SSM SUS316 Bulkhead Union



Model	Tube dia. φD	M	B		φP	C		E		H	G	Mass (g)	Orifice (φmm)	Eff. a. (mm ²)	
			min	max		min	max	min	max						
SSM 4	4	M12×1	4	43.5	45.5	10	17.5	18	15.5	16	14	4	18.5	3	4.5
SSM 6	6	M14×1	6	46	49	12	18.5	20	15.5	17	17	4	27.5	4.6	10.8
SSM 8	8	M16×1	6	50	53	14	20.5	22	17.5	19	19	4	35.5	6.5	25.5
SSM 10	10	M20×1	6	56	59	17	24	25.5	19.5	21	24	5	60	8.5	34.8
SSM 12	12	M22×1	6	61.5	65	20	25.5	27.5	21	23	27	6	86	10	48.5
SSM 16	16	M27×1.5	5.5	71	75	23.5	31	33	26	28	32	6	116.5	14	85.5

