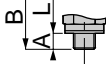
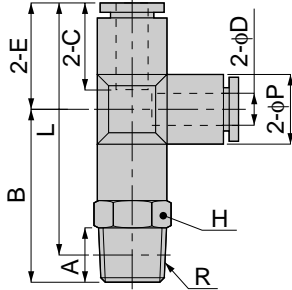


Tube Fitting Series SUS304 Type

unit:mm

PD SUS304

Branch Tee



Metric thread type

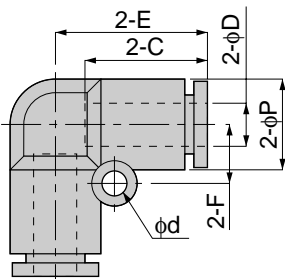


Model	Tube dia. ϕD	R	A	B	L	ϕP	C	E	H	Mass (g)	Orifice (ϕ mm)	Eff. a. (mm^2)		
PD 4-M5SUS	4	M5×0.8	3	20.5	35	10	15	17	10	11.5	1.8	1.9		
PD 4-M6SUS		M6×1	4	21.5						16				
PD 4-01SUS		R1/8	8	24.5	37.5				14.5	3	5.3			
PD 4-02SUS		R1/4	11	27.5					23.5					
PD 6-M5SUS	6	M5×0.8	3	23	40.5	13	17	20	12	15.5	1.8	1.9		
PD 6-M6SUS		M6×1	4	24						16			3	6.4
PD 6-01SUS		R1/8	8	26	42				17	4.6	12.5			
PD 6-02SUS		R1/4	11	29	43				14			26		
PD 6-03SUS	R3/8	12	31	44.5	17	38.5								
PD 8-01SUS	8	R1/8	8	28.5	46	15	18	22	14	22.5	6	20		
PD 8-02SUS		R1/4	11	31.5	47				17				28.5	
PD 8-03SUS		R3/8	12	33	48.5				17				41	
PD 10-01SUS	10	R1/8	8	33	54.5	17.5	20	25.5	17	41	8	35		
PD 10-02SUS		R1/4	11	36	55.5					17			41.5	
PD 10-03SUS		R3/8	12	37	56				21	50.5				
PD 10-04SUS		R1/2	15	40	57.5				21	72				
PD 12-02SUS	12	R1/4	11	38	60	21	23.5	28	21	61	8	35		
PD 12-03SUS		R3/8	12	39	60.5				21	62.5			10	59
PD 12-04SUS		R1/2	15	42	62				21	77.5				
PD 16-03SUS	16	R3/8	12	47	74	25	24	33.5	22	89.5	11	79.5		
PD 16-04SUS		R1/2	15	51	74.5				22	99	13	92.8		

unit:mm

PV SUS304

Union Elbow

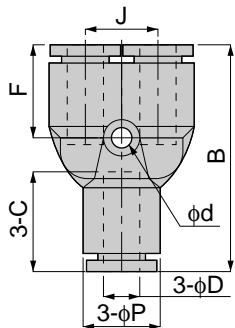


Model	Tube dia. ϕD	ϕP	C	E	ϕd	F	Mass (g)	Orifice (ϕ mm)	Eff. a. (mm^2)
PV 4SUS	4	10	15	17	-	-	5	2.8	4.2
PV 6SUS	6	12.5	17	20.5	3.2	8	7.5	5	10
PV 8SUS	8	15	18	22	4.2	10	10	7	16.5
PV 10SUS	10	17.5	20	26	4.2	12	17	9	30
PV 12SUS	12	21	23.5	29	4.2	14	24.5	11	47
PV 16SUS	16	25	24	33	4.2	12	30	13	91.6

unit:mm

PY SUS304

Union Y



Model	Tube dia. ϕD	B	ϕP	C	J	ϕd	F	Mass (g)	Orifice (ϕ mm)	Eff. a. (mm^2)
PY 4SUS	4	33.5	10	15	11	3.2	14.5	8	3	4.2
PY 6SUS	6	38	13	17	12	3.2	16	10.5	4.6	10
PY 8SUS	8	43	15	18.5	14	3.2	17.5	15.5	6	16.5
PY 10SUS	10	49	18	20.5	18	4.5	20	25.5	7.5	27
PY 12SUS	12	55	21.5	23.5	20	4.5	22.5	37	9	38
PY 16SUS	16	63	24.5	24.5	24	4.5	22.5	44	13	56.5