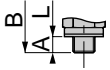
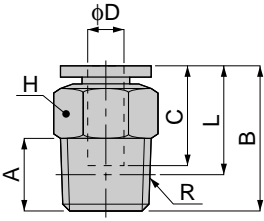


# Tube Fitting Series SUS304 Type

unit:mm

**PC**  
SUS304

Straight



Metric thread type

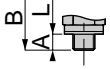
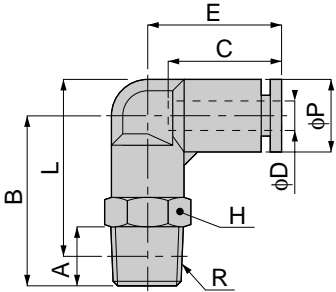


Model	Tube dia. $\phi D$	R	A	B	L	C	H	Mass (g)	Orifice ( $\phi mm$ )	Eff. a. ( $mm^2$ )		
PC 4-M5SUS	4	M5×0.8	3	20	17	15	10	6.5	1.8	1.9		
PC 4-M6SUS		M6×1	4	21.5			10		3	6.2		
PC 4-01SUS		R1/8	8	21	14		8.5	3	5.3			
PC 4-02SUS		R1/4	11	15								
PC 6-M5SUS	6	M5×0.8	3	22	19	17	12	9.5	1.8	1.9		
PC 6-M6SUS		M6×1	4	23			12		3	6.2		
PC 6-01SUS		R1/8	8	22.5	18.5		9	4.6	12.5			
PC 6-02SUS		R1/4	11	24.5						14	17	
PC 6-03SUS	R3/8	12	23.5	17	27							
PC 8-01SUS	8	R1/8	8	28	24	18	14	15	6	20		
PC 8-02SUS		R1/4	11	26.5	20.5				7			
PC 8-03SUS		R3/8	12	24	17.5				17		23	
PC 10-01SUS	10	R1/8	8	30.5	26.5	20	17	22.5	6	22.9		
PC 10-02SUS		R1/4	11	30	24			20				
PC 10-03SUS		R3/8	12	29.5	23		26	8.5	35			
PC 10-04SUS		R1/2	15	30.5	22.5						21	49
PC 12-02SUS	12	R1/4	11	36	30	23.5	21	43	8.5	35		
PC 12-03SUS		R3/8	12	32	25.5			35.5			11	59
PC 12-04SUS		R1/2	15	34	26			49.5				
PC 16-03SUS	16	R3/8	12	39.5	33	24.5	24	59.5	11	83.3		
PC 16-04SUS		R1/2	15	41.5	33.5			67			13	114

unit:mm

**PL**  
SUS304

Elbow



Metric thread type



Model	Tube dia. $\phi D$	R	A	B	L	$\phi P$	C	E	H	Mass (g)	Orifice ( $\phi mm$ )	Eff. a. ( $mm^2$ )		
PL 4-M5SUS	4	M5×0.8	3	21.5	24.5	10	15	17	10	9	1.8	1.5		
PL 4-M6SUS		M6×1	4	22.5	24.5					9.5				
PL 4-01SUS		R1/8	8	23.5	24.5			18.5	12	3	4.2			
PL 4-02SUS		R1/4	11	26.5	25.5							14	21	
PL 6-M5SUS	6	M5×0.8	3	22	25.5	12.5	17	19.5	12	12	1.8	1.5		
PL 6-M6SUS		M6×1	4	23						12			3	6.1
PL 6-01SUS		R1/8	8	25	27			20	14	22	4.6	10		
PL 6-02SUS		R1/4	11	28	28								17	35
PL 6-03SUS	R3/8	12	30	29.5										
PL 8-01SUS	8	R1/8	8	28	31	14.5	18	23	14	18	6	16.5		
PL 8-02SUS		R1/4	11	31	32					24				
PL 8-03SUS		R3/8	12	33	33.5					17			37	
PL 10-01SUS	10	R1/8	8	36	38.5	17.5	20	26.5	17	31	6	22.4		
PL 10-02SUS		R1/4	11	37	39					34				
PL 10-03SUS		R3/8	12	40	40.5				42	8	30			
PL 10-04SUS		R1/2	15	37.5									21	64
PL 12-02SUS	12	R1/4	11	39	43	21	23.5	29.5	21	50.5	8	30		
PL 12-03SUS		R3/8	12	41.5	44.5					51.5			10	47
PL 12-04SUS		R1/2	15	33	39.5					66				
PL 16-03SUS	16	R3/8	12	47	53	25	24.5	33.5	22	81.5	13	80.2		
PL 16-04SUS		R1/2	15	51	55.5					85.5			93.3	