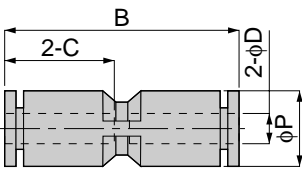


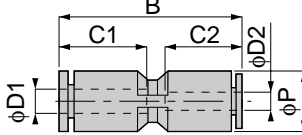
Tube Fitting Series SUS304 Type

PU SUS304 Union Straight



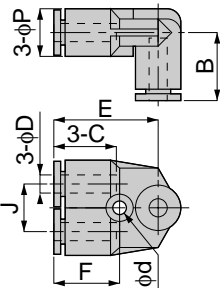
Mode	Tube dia. ϕD	B	ϕP	C	Mass (g)	Orifice (ϕmm)	Eff. a. (mm^2)
PU 4SUS	4	31	10	15	5	3.8	5.3
PU 6SUS	6	35	12.5	17	6.5	5.5	12.5
PU 8SUS	8	38	14.5	18	9.5	7	20
PU 10SUS	10	44	17.5	20	16	9	35
PU 12SUS	12	48	21	23.5	22	11	59
PU 16SUS	16	50	25	24.5	25	13	147.6

PG SUS304 Different Diam. Union Straight



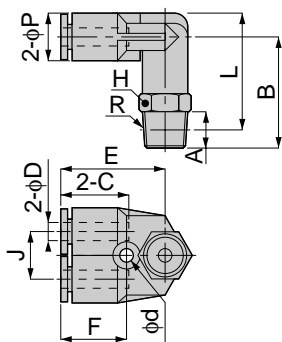
Mode	Tube dia. $\phi D1$	Tube dia. $\phi D2$	B	ϕP	C1	C2	Mass (g)	Orifice (ϕmm)	Eff. a. (mm^2)
PG 6-4SUS	6	4	34.5	12.5	17	15	6.5	3	5.3
PG 8-6SUS	8	6	38.5	14.5	18	17	9	5.5	12.5
PG 10-8SUS	10	8	44	17.5	20	18	14.5	7	20
PG 12-10SUS	12	10	53.5	21	23.5	20	22.5	9	35
PG 16-12SUS	16	12	49.5	25	24.5	23.5	26.5	10	88.6

PAU SUS304 Union A



Mode	Tube dia. ϕD	B	ϕP	C	J	E	ϕd	F	Mass (g)	Orifice (ϕmm)	Eff. a. (mm^2)
PAU 4SUS	4	17	10	15	11	23	3.2	14.5	8	3	2.5
PAU 6SUS	6	20	12.5	17	12	26.5	4.2	15.5	11.5	4.6	7.2
PAU 8SUS	8	23	14.5	18	14	29.5	4.2	17	16.5	6	16.3
PAU 10SUS	10	25.5	18	20	18	34	4.2	19	27	8	27.9
PAU 12SUS	12	29.5	21.5	23.5	20	35.5	4.2	20.5	39	10	40

PAX SUS304 Branch Elbow



Metric thread type



Mode	Tube dia. ϕD	R	A	B	L	ϕP	C	J	E	H	ϕd	F	Mass (g)	Orifice (ϕmm)	Eff. a. (mm^2)						
PAX 4-M5SUS	4	M5×0.8	3	21.5	23.5	10	15	11	18	10	3.2	14.5	12.5	1.8	2.2						
PAX 4-M6SUS		M6×1	4	22.5												15.5	3	2.5			
PAX 4-01SUS		R1/8	8	24.5															25.5	24	2.5
PAX 4-02SUS		R1/4	11	27.5															26.5		
PAX 6-M5SUS	M5×0.8	3	25	28	20.5	12	4.2	15.5	17	1.8	2.2										
PAX 6-M6SUS	M6×1	4	26									17.5	3	6.4							
PAX 6-01SUS	R1/8	8	28												30	18.5	4.6	6.6			
PAX 6-02SUS	R1/4	11	31												31				26.5	4.6	6.6
PAX 6-03SUS	R3/8	12	33	32.5	39.5	6.8															
PAX 8-01SUS	R1/8	8	31	34			25	6	14.6												
PAX 8-02SUS	R1/4	11	34	35						30.5	14.5										
PAX 8-03SUS	R3/8	12	36	36.5								44	15								
PAX 10-01SUS	R1/8	8	34	39	44	15															
PAX 10-02SUS	R1/4	11	37	40			45	26.1													
PAX 10-03SUS	R3/8	12	38	40.5					53.5	27.2											
PAX 10-04SUS	R1/2	15	41	42							75.5	29.9									
PAX 12-02SUS	R1/4	11	41	45.5	66	10							38.2								
PAX 12-03SUS	R3/8	12	42	46			67	43.1													
PAX 12-04SUS	R1/2	15	45	47.5					83	42.1											