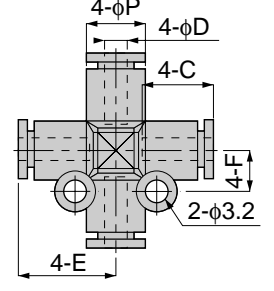


**PZA**  
MINI TYPE

Cross A



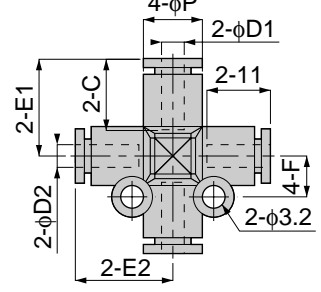
unit:mm

Model	Tube dia. φD	φP	C	E	F	Mass (g)	Orifice (φmm)	Eff. a. (mm <sup>2</sup> )
PZA 3M	3	8	11	13	5.5	4	2	2.2
PZA 4M	4	8	11	13.5	5.5	4	3	4.8
PZA 6M	6	10.5	11.5	15	6.5	5	4	8.8
PZA 1/8M	1/8	8	11	13	5.5	4	3	4.8



**PZB**  
MINI TYPE

Cross B



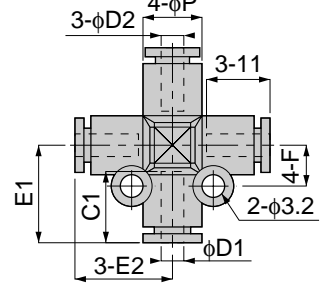
unit:mm

Model	Tube dia. φD1	Tube dia. φD2	φP	C	E1	E2	F	Mass (g)	Orifice (φmm)	Eff. a. (mm <sup>2</sup> )
PZB 4-3M	4	3	8	11	13	13	5.5	4	2	2.2
PZB 4-1/8M		1/8							3	4.8
PZB 6-4M	6	4	10.5	11.5	15	14.5	6.5	6.5	3	5.3
PZB 6-1/8M		1/8								
PZB 1/8-3M	1/8	3	8	11	13	13	5.5	4.5	2	2.2



**PZC**  
MINI TYPE

Cross C



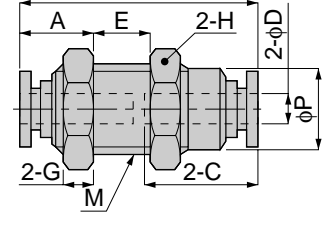
unit:mm

Model	Tube dia. φD1	Tube dia. φD2	φP	C	E1	E2	F	Mass (g)	Orifice (φmm)	Eff. a. (mm <sup>2</sup> )
PZC 4-3M	4	3	8	11	13	13	5.5	4	2	2.2
PZC 4-1/8M		1/8						4.5	3	2.4
PZC 6-4M	6	4	10.5	11.5	15	14.5	6.5	6.5	3	4.9
PZC 6-1/8M		1/8								2.4
PZC 1/8-3M	1/8	3	8	11	13	13	5.5	4.5	2	1.9



**PM**  
MINI TYPE

Bulkhead Union



unit:mm

Model	Tube dia. φD	M	B	φP	C	E1	E2	H	G	Mass (g)	Orifice (φmm)	Eff. a. (mm <sup>2</sup> )
PM 3M	3	M8×0.75	19	7	9.5	7	7.5	10	2	3	2	2.4
PM 4M	4	M10×1	23	9	11	9	7.5	12	3	6	3	3.7
PM 6M	6	M12×1	24.5	11	11.5	10.5	6	14	4	9	4	10.5



unit:inch

MODEL	Tube dia. φ D	UNF	B	φ P	C	E1	E2	H	Weight (g)	Orifice φ MM	Eff.a. mm <sup>2</sup>	Cv
PM 1/8MU	1/8	7/16-20	0.91	0.35	0.43	0.35	0.30	1/2	6.6	3.0	3.7	0.20
PM 5/32MU	5/32	7/16-20	0.91	0.35	0.43	0.35	0.30	1/2	6.5	3.0	3.7	0.20