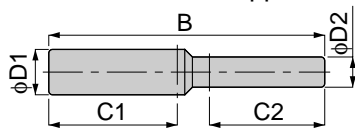


PIG

Different Diam. Nipple



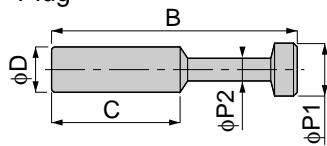
unit:mm

Model	$\phi D1$	$\phi D2$	B	C1	C2	Mass (g)	Orifice (ϕmm)	Eff. a. (mm^2)
PIG 6-4	6	4	36.5	17	15	0.5	2.5	4.2
PIG 8-6	8	6	40.5	18	17	1	4	11.2
PIG 10-8	10	8	44	20	18	1.5	6	19
PIG 12-10	12	10	49.5	23.5	20	2	7.5	39.7
PIG 16-12	16	12	54.5	24	23.5	4.5	9	47.5



PP

Plug



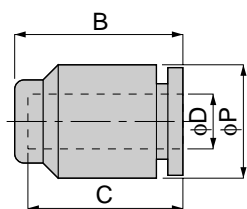
unit:mm

Model	ϕD	B	$\phi P1$	$\phi P2$	C	Mass (g)
PP 4	4	28	5	3	15	0.5
PP 6	6	33	7	3	17	0.5
PP 8	8	37	9	4	18	1
PP 10	10	42	11	5	20.5	2
PP 12	12	44	13	6	23	2.5
PP 16	16	46	17	8	24	4
PP 1/4	1/4	33	7.5	3	17	0.5
PP 5/16	5/16	37	9	4	18	1
PP 3/8	3/8	42	10.5	5	20.5	1.5



PPF

Cap



unit:mm

Model	ϕD	B	ϕP	C	Mass (g)
PPF 4	4	16.5	10	15	2.5
PPF 6	6	18.5	13	17	3.5
PPF 8	8	20	15	18	5
PPF 10	10	22.5	18	20.5	8
PPF 12	12	25	21.5	23	11.5
PPF 1/4	1/4	19	13	17	3.5
PPF 5/16	5/16	20	15	18	5
PPF 3/8	3/8	22.5	18	20	8

