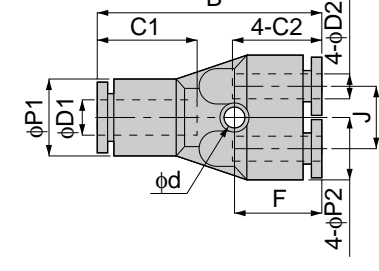




Different Diam. Double Y

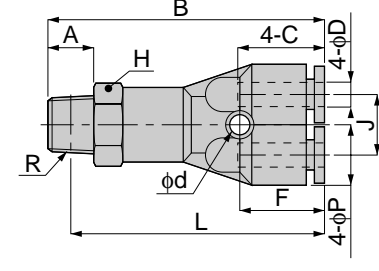


unit:mm

Model	Tube dia. φD1	Tube dia. φD2	B	φP1	φP2	C1	C2	J	φd	F	Mass (g)	Orifice (φmm)	Eff. a. (mm ²)
PRG 6-4	6	4	38	13	10.5	17	15	10	3.2	14.5	14	2.3	1.5
PRG 8-6	8	6	42.5	14.5	13	18	17	13	3.5	16	20.5	4	8.2



Branch Double Y



unit:mm

Model	Tube dia. φD	R	A	B	L	φP	C	J	H	φd	F	Mass (g)	Orifice (φmm)	Eff. a. (mm ²)
PRX 4-01	4	R1/8	8	46	42	10.5	15	10	12	3.2	14.5	21.5	2.3	1.5
PRX 4-02		R1/4	11	49	43				14					1.4
PRX 6-01	6	R1/8	8	50.5	46.5	13	17	13	14	3.5	16	29	3.9	9

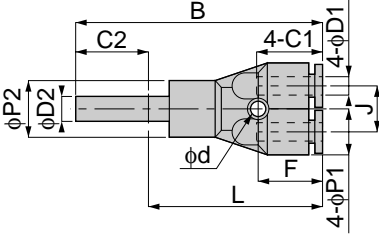


unit:inch

MODEL	Tube dia. φD1	NPT	A	B	L	φP	C	J	H	φd	F	Weight (g)	Orifice φMM	Eff.a. mm ²	Cv
PRX 5/32-N1U	5/32	1/8	0.31	1.81	1.65	0.41	0.59	0.39	1/2	3.2	0.6	21.7	3.0	1.5	0.08
PRX 5/32-N2U	5/32	1/4	0.43	1.93	1.69	0.41	0.59	0.39	9/16	3.2	0.6	29.3	3.0	1.4	0.08
PRX 3/16-N1U	3/16	1/8	0.31	1.99	1.83	0.51	0.67	0.51	9/16	3.2	0.6	29.8	4.6	5.4	0.29
PRX 1/4-N1U	1/4	1/8	0.31	1.99	1.83	0.51	0.67	0.51	1/2	3.2	0.6	29.0	4.6	9.0	0.49



Branch Union Double Y

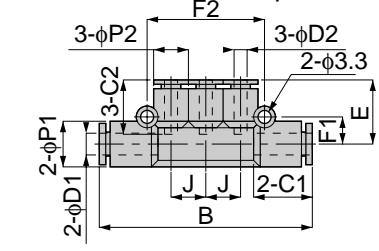


unit:mm

Model	Tube dia. φD1	φD2	B	L	φP1	φP2	C1	C2	J	φd	F	Mass (g)	Orifice (φmm)	Eff. a. (mm ²)
PRJ 6-4	4	6	55	38.5	10.5	13	15	17	10	3.2	14.5	13	4	1.5
PRJ 8-6	6	8	61	43.5	13	14	17	18	13	3.5	16	19	6	7.1



Different Diam. Triple



unit:mm

Model	Tube dia. φD1	Tube dia. φD2	B	φP1	φP2	C1	C2	J	E	F1	F2	Mass (g)	Orifice (φmm)	Eff. a. (mm ²)
PKG 6-4	6	4	60.5	13	10	17	15	10	18.5	8	34	16	3	5
PKG 8-4	8	4	63	15	10	18	15	10	19.5	9	34	19	3	6
PKG 8-6		6	70		13	17	12	21.5			40	23	4.6	10.1
PKG 10-6	10	6	80.5	18	15	20	17	14	24	10.5	46	31	4.6	11.2
PKG 10-8		8					18					33	7	19.1

