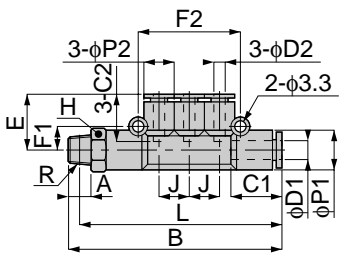




Branch Triple



unit:mm

Model	Tube dia. φD1	Tube dia. φD2	R	A	B	L	φP1	φP2	C1	C2	J	E	H	F1	F2
PKD 6-4-01	6	4	R1/8	8	68.5	64.5	13	10	17	15	10	18.5	12	8	34
PKD 8-4-02	8	4	R1/4	11	74	68	15	10	18.5	15	10	19.5	14	9	34
PKD 8-6-02		6			81	75									
PKD 10-8-03	10	8	R3/8	12	93.5	87	18	15	20	18.5	14	24	31	10.5	46

Model	Mass (g)	Orifice (φmm)	Eff. a. (mm ²)
PKD 6-4-01	23	3	5
PKD 8-4-02	33.5	3	5.2
PKD 8-6-02	36.5	4.6	9.6
PKD 10-8-03	59.5	7	19.1

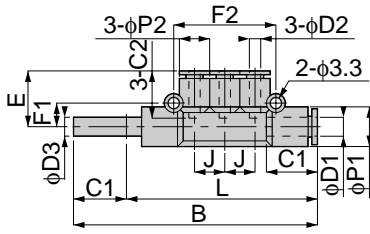


unit:inch

MODEL	Tube dia. φD1	Tube dia. φD2	NPT	A	B	L	φP1	φP2	C1	C2	J	E	H	F1	F2	Weight (g)	Orifice φMM	Eff.a. mm ²	Cv
PKD 3/16-5/32-N1U	3/16	5/32	1/8	0.31	2.70	2.54	0.51	0.39	0.67	0.59	0.39	0.65	1/2	0.31	1.34	24.2	3.0	4.6	0.25
PKD 5/16-5/32-N2U	5/16	5/32	1/4	0.31	2.91	2.24	0.59	0.39	0.71	0.59	0.39	0.79	9/16	0.35	1.34	33.6	3.0	5.4	0.29
PKD 5/16-3/16-N2U	5/16	3/16	1/4	0.43	3.19	2.95	0.59	0.51	0.71	0.67	0.47	0.79	9/16	0.35	1.57	37.7	4.0	6.6	0.36
PKD 5/16-1/4-N2U	5/16	1/4	1/4	0.43	3.19	2.95	0.59	0.51	0.71	0.67	0.47	0.79	9/16	0.35	1.57	36.9	4.6	12.1	0.66
PKD 3/8-5/16-N3U	3/8	5/16	3/8	0.47	3.68	3.44	0.69	0.51	0.79	0.71	0.47	0.94	11/16	0.41	1.81	60.1	7.0	20.3	1.10



Branch Union Triple

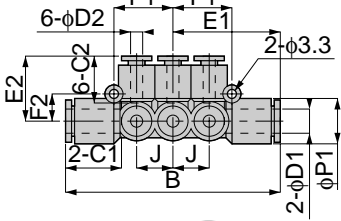


unit:mm

Model	Tube dia. φD1	Tube dia. φD2	φD3	B	L	φP1	φP2	C1	C2	J	E	F1	F2	Mass (g)	Orifice (φmm)	Eff. a. (mm ²)
PKJ 6-4	6	4	4	78	60.5	13	10	17	15	10	18.5	8	34	14.5	3	4
PKJ 8-4	8	4	8	81.5	63	15	10	18	15	10	19.5	9	34	17.5	3	4.4
PKJ 8-6		6		88.5	70											
PKJ 10-8	10	8	10	100	75.5	18	15	20	18	14	24	10.5	46	30.5	7	20.3



Different Diam. Triple Double



unit:mm

Model	Tube dia. φD1	Tube dia. φD2	B	φP1	φP2	C1	C2	J	E1	E2	F1	F2	Mass (g)	Orifice (φmm)	Eff. a. (mm ²)
PKVG 8-4	8	4	70	15	13	18	15	12	35	21	20	9	31	3	4.5
PKVG 8-6		6					17			21.5					
PKVG 10-6	10	6	80.5	17.5	15	20	17	14	40.5	24	23	10.5	44	4.6	10.7
PKVG 10-8		8					18								

