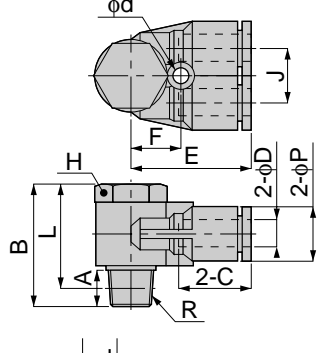


CAD **PA**

Branch A



Metric thread type

unit:mm

Model	Tube dia. $\phi D$	R	A	B	L	$\phi P$	C	J	E	H	$\phi d$	F	Mass (g)	Orifice ( $\phi mm$ )	Eff. a. ( $mm^2$ )
PA 4-M5	4	M5x0.8	3	17	14	10	15	10	20.5	8	-	-	9.5	1.8	1.9
PA 6-01	6	R1/8	8	27	23	12.5	16.5	12	26.5	14	3.2	10.5	24.5	4.6	8.3
PA 8-02	8	R1/4	11	31.5	25.5	14.5	17.5	14	29.5	17	3.2	12.5	41.5	6	15.5
PA 10-03	10	R3/8	12	36	29.5	17.5	20	17	33.5	21	4.2	15	69.5	8	25.2
PA 12-04	12	R1/2	15	40	32	21	23.5	20	37.5	24	4.2	17	102	10	39.7

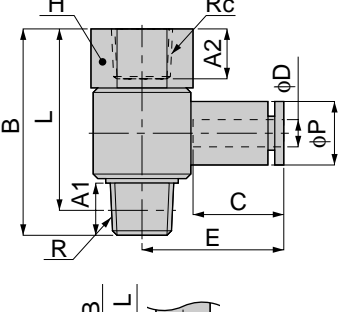


unit:inch

MODEL	Tube dia. $\phi D$	NPT	A	B	L	$\phi P$	C	J	E	H	$\phi d$	F	Weight (g)	Orifice $\phi MM$	Eff.a. $mm^2$	Cv
PA 5/32-U10U	3/32	10-32UNF	0.14	0.67	0.28	0.39	0.59	0.39	0.79	7/16	-	-	9.5	1.8	1.9	0.10
PA 3/16-N1U	3/16	1/8	0.31	1.06	0.43	0.49	0.67	0.47	1.02	1/2	0.13	0.41	25.3	4.0	5.9	0.32
PA 1/4-N1U	1/4	1/4	0.31	1.06	0.43	0.49	0.67	0.47	1.02	1/2	0.13	0.41	24.8	4.6	8.3	0.45
PA 5/16-N2U	5/16	1/4	0.43	1.24	0.49	0.57	0.71	0.55	1.14	9/16	0.13	0.49	42.4	6.0	15.5	0.84
PA 3/8-N3U	3/8	3/8	0.47	1.42	0.57	0.69	0.79	0.67	1.32	11/16	0.17	0.37	72.1	8.0	25.2	1.37
PA 1/2-N4U	1/2	1/2	0.59	1.57	0.69	0.83	0.93	0.79	1.48	7/8	0.17	0.67	106.8	10.0	39.7	2.15

CAD **PHF**

Female Universal Elbow



Metric thread type

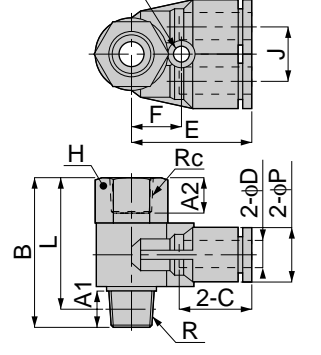


unit:mm

Model	Tube dia. $\phi D$	R&Rc	A1	A2	B	L	$\phi P$	C	E	H	Mass (g)	Orifice ( $\phi mm$ )	Eff. a. ( $mm^2$ )
PHF 4-M5	4	M5x0.8	3	5	20	17	10	15	20	8	8	1.8	1.7
PHF 4-01		R1/8	8	8	32.5	28.5		15	22.5	14	23	3	4.8
PHF 6-M5	6	M5x0.8	3	5	20	17	12.5	17	24	8	9	1.8	1.6
PHF 6-01		R1/8	8	8	32.5	28.5		16.5	24.5	14	24	4.6	8.4
PHF 6-02	R1/4	11	11	38.5	32.5	15	17.5	27	17	39	6	10.2	
PHF 8-01	8	R1/8	8	8	32.5	28.5	15	17.5	26.5	14	25.5	5	10.3
PHF 8-02		R1/4	11	11	38.5	32.5			28.5	17	40.5	6	15.5
PHF 8-03	R3/8	12	12	44.5	38	18.5	20	30.5	21	65	6	18.9	
PHF 10-02	10	R1/4	11	11	38.5	32.5	18.5	20	30.5	17	43.5	6.5	15.4
PHF 10-03		R3/8	12	12	44.5	38			32.5	21	68.5	8	24.9
PHF 12-03	12	R3/8	12	12	44.5	38	21	23.5	35.5	21	71.5	8.5	28.3
PHF 12-04		R1/2	13	15	52	44			38.5	24	105	10	42.6
PHF 1/4-M5	1/4	M5x0.8	3	5	20	17	12.5	17	24	8	9	1.8	1.6
PHF 1/4-01		R1/8	8	8	32.5	28.5		16.5	24.5	14	24	4.6	9.1
PHF 1/4-02	R1/4	11	11	38.5	32.5	15	17.5	24	17	39	6	11.6	
PHF 5/16-01	5/16	R1/8	8	8	32.5	28.5	15	17.5	26.5	14	25.5	5	10.3
PHF 5/16-02		R1/4	11	11	38.5	32.5			28.5	17	40.5	6	15.5
PHF 5/16-03	R3/8	12	12	44.5	38	18.5	20	30.5	21	65	6	18.9	
PHF 3/8-02	3/8	R1/4	11	11	38.5	32.5	18.5	20	30.5	17	43.5	6.5	18.1
PHF 3/8-03		R3/8	12	12	44.5	38			32.5	21	68.5	8	22.8

CAD **PAF**

Female Branch A



Metric thread type



unit:mm

Model	Tube dia. $\phi D$	R&Rc	A1	A2	B	L	$\phi P$	C	J	E	H	Mass (g)	Orifice ( $\phi mm$ )	Eff. a. ( $mm^2$ )
PAF 4-M5	4	M5x0.8	3	4	20	17	10	15	-	20.5	8	10	1.8	1.7
PAF 6-01	6	R1/8	8	8	32.5	28.5	12.5	16.5	12	26.5	14	27	4.6	7
PAF 8-02	8	R1/4	11	11	38.5	32.5	14.5	17.5	14	29.5	17	45	6	13.8
PAF 10-03	10	R3/8	12	12	44.5	38	18	20	17	33.5	21	74.5	8	21.9
PAF 12-03	12	R3/8	12	12	51	44.5	21	23.5	20	37.5	24	122	9.3	38.7
PAF 12-04		R1/2	13	13	52	44	21.5					106	10	39.2