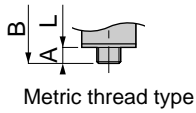
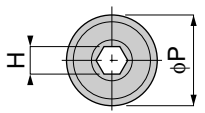
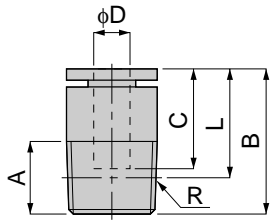




Hex. -Holed Straight



unit:mm

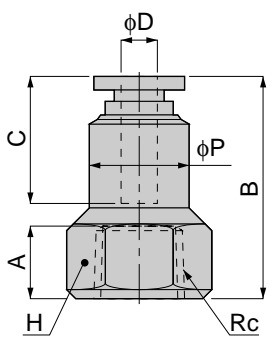
Model	Tube dia. ϕD	R	A	B	L	ϕP	C	H	Mass (g)	Orifice (ϕmm)	Eff. a. (mm^2)
POC 4-M5	4	M5×0.8	3	20	17	10	15	2	5.5	2.1	2
POC 4-M6		M6×1	4	21.5	17.5			3		5.2	
POC 4-01		R1/8	8	21	17			2.5		8	2.6
POC 6-M5	6	M5×0.8	3	23	20	12	17	2	8	2.1	3.2
POC 6-M6		M6×1	4	22.5	18.5			3		6.5	7.4
POC 6-01		R1/8	8	22.5	16.5			14		4	8
POC 6-02	R1/4	11	14	4.2		11					
POC 8-01	8	R1/8	8	28	24	14	18	5	14	5.3	17
POC 8-02		R1/4	11	27	21			6	14.5	6.3	20
POC 8-03		R3/8	12	24	17.5			17	22		
POC 10-02	10	R1/4	11	30	24	18	20.5	6	22	6.3	20
POC 10-03		R3/8	12	29.5	23			6	27		
POC 10-04		R1/2	15	30.5	22.5			21	48		
POC 12-03	12	R3/8	12	32	25.5	21	23.5	8	33.5	8.5	40
POC 12-04		R1/2	15	34	26			48			
POC 1/4-01	1/4	R1/8	8	22.5	18.5	12	17	4	8	4.2	11
POC 1/4-02		R1/4	11		16.5	14		4	14		
POC 5/16-01	5/16	R1/8	8	28	24	14	18	5	14	5.3	17
POC 5/16-02		R1/4	11	27	21			6	14.5	6.3	20
POC 5/16-03		R3/8	12	24	17.5			17	22		
POC 3/8-02	3/8	R1/4	11	30	24	18	20	6	22	6.3	20
POC 3/8-03		R3/8	12	29.5	23			6	27		
POC 3/8-04		R1/2	15	30.5	22.5			21	48		

unit:inch

MODEL	Tube dia. ϕD	NPT	A	B	L	ϕP	C	H	Weight (g)	Orifice ϕMM	Eff.a. mm^2	Cv
POC 5/32-U10U	5/32	10-32UNF	0.14	0.79	0.65	0.37	0.59	3/32	5.4	2.5	4.7	0.25
POC 5/32-N1U	5/32	1/8	0.31	0.83	0.67	0.37	0.59	3/32	7.8	2.5	4.9	0.27
POC 1/4-U10U	1/4	10-32UNF	0.14	0.91	0.77	0.47	0.67	3/32	8.0	2.5	4.7	0.25
POC 1/4-N1U	1/4	1/8	0.31	0.87	0.73	0.47	0.67	5/32	8.3	4.0	12.8	0.69
POC 1/4-N2U	1/4	1/4	0.43	0.87	0.65	0.47	0.67	5/32	14.1	4.0	12.9	0.70
POC 5/16-N1U	5/16	1/8	0.31	1.10	0.94	0.55	0.71	3/16	14.4	5.0	18.3	0.99
POC 5/16-N2U	5/16	1/4	0.43	1.04	0.81	0.55	0.71	7/32	15.3	5.8	22.4	1.21
POC 5/16-N3U	5/16	3/8	0.47	0.94	0.69	0.55	0.71	7/32	22.8	5.8	22.8	1.24
POC 3/8-N2U	3/8	1/4	0.43	1.18	0.94	0.71	0.79	7/32	22.7	5.8	23.0	1.25
POC 3/8-N3U	3/8	8/3	0.47	1.16	0.91	0.71	0.79	7/32	29.1	5.8	23.1	1.25
POC 3/8-N4U	3/8	1/2	0.59	1.20	0.89	0.71	0.79	7/32	49.1	5.8	22.8	1.24



Female Straight



unit:mm

Model	Tube dia. ϕD	Rc	A	B	ϕP	C	H	Mass (g)	Orifice (ϕmm)	Eff. a. (mm^2)
PCF 4-01	4	Rc1/8	8	24.5	11	15	14	15.5	3	5.3
PCF 4-02		Rc1/4	11	27.5			17	22	4.1	6.1
PCF 6-01	6	Rc1/8	8	26.5	13	17	14	18	4.6	12.5
PCF 6-02		Rc1/4	11	29.5			17	25		
PCF 8-01	8	Rc1/8	8	28	14.5	18	14	19.5	6	26
PCF 8-02		Rc1/4	11	31	15		17	27		
PCF 8-03		Rc3/8	12	32	21		36			
PCF 10-02	10	Rc1/4	11	34	17.5	20	17	32	8.5	43
PCF 10-03		Rc3/8	12	35			21	41		
PCF 12-02	12	Rc1/4	11	36	21	23.5	21	56	11	40.7
PCF 12-03		Rc3/8	12	37			21	51.5		71
PCF 1/4-01	1/4	Rc1/8	8	26.5	13	17		18	4.6	12.5
PCF 1/4-02		Rc1/4	11	29				25		
PCF 5/16-01	5/16	Rc1/8	8	28	14.5	18	14	19.5	6	20
PCF 5/16-02		Rc1/4	11	31	15		17	27		
PCF 5/16-03		Rc3/8	12	34	21		36			
PCF 3/8-02	3/8	Rc1/4	11	34	17.5	20	17	33	8.5	43
PCF 3/8-03		Rc3/8	12	35			21	41		

unit:inch

MODEL	Tube dia. ϕD	NPT	A	B	ϕP	C	H	Weight (g)	Orifice ϕMM	Eff.a. mm^2	Cv
PCF 5/32-N1U	5/32	1/8	0.31	0.96	0.43	0.59	9/16	14.9	3.0	5.3	0.29
PCF 5/32-N2U	5/32	1/4	0.43	1.08	0.43	0.59	11/16	22.1	3.0	6.1	0.33
PCF 3/16-N1U	3/16	1/8	0.31	1.04	0.51	0.69	9/16	18.2	4.0	5.9	0.32
PCF 3/16-N2U	3/16	1/4	0.43	1.14	0.51	0.69	11/16	25.3	4.0	6.9	0.37
PCF 1/4-N1U	1/4	1/8	0.31	1.04	0.51	0.69	9/16	17.6	4.6	12.5	0.68
PCF 1/4-N2U	1/4	1/4	0.43	1.14	0.51	0.69	11/16	25.0	4.6	12.5	0.68
PCF 5/16-N1U	5/16	1/8	0.31	1.10	0.55	0.71	9/16	18.2	6.0	20.0	1.08
PCF 5/16-N2U	5/16	1/4	0.43	1.22	0.59	0.71	11/16	27.8	6.0	20.0	1.08
PCF 5/16-N3U	5/16	3/8	0.47	1.26	0.59	0.71	7/8	37.9	6.0	20.0	1.08
PCF 3/8-N2U	3/8	1/4	0.43	1.34	0.69	0.79	11/16	34.1	8.5	31.9	1.73
PCF 3/8-N3U	3/8	3/8	0.47	1.26	0.69	0.79	7/8	44.6	8.5	33.5	1.82
PCF 1/2-N2U	1/2	1/4	0.43	1.34	0.82	0.89	7/8	57.9	11.0	40.7	2.21
PCF 1/2-N3U	1/2	3/8	0.47	1.38	0.82	0.89	7/8	52.4	11.0	71.0	3.85