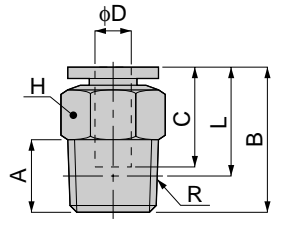




Straight



Metric thread type



unit:mm

Model	Tube dia. φD	R	A	B	L	C	H	Mass (g)	Orifice (φmm)	Eff. a. (mm ²)
PC 4-M5	4	M5×0.8	3	20.5	17.5	15	10	6.5	1.8	1.9
PC 4-M50			3	23	18.5		8			
PC 4-M6		M6×1	4	21.5	17		10	8.5	3	6.2
PC 4-01			R1/8		8		17.5			
PC 4-02	R1/4	11	15.5	14	16	16	3	5.3		
PC 6-M5	6	M5×0.8	3	22.5	19.5	17	12	9	1.8	1.9
PC 6-M6			4	23.5			12			
PC 6-01		R1/8	8	23			19	9	4.6	12.5
PC 6-02			R1/4	11			25	14		
PC 6-03	R3/8	12	24	17.5	17	27	4.6	12.5		
PC 8-01	8	R1/8	8	28	24	18.5	14	15	6	20
PC 8-02		R1/4	11	27	21		17	23	7	
PC 8-03		R3/8	12	24	17.5		17	23		
PC 10-01	10	R1/8	8	30.5	26.5	21	17	22.5	6	22.9
PC 10-02		R1/4	11	30	24			20	8.5	35
PC 10-03		R3/8	12	29.5	23		26			
PC 10-04		R1/2	15	30.5	22.5		21	49		
PC 12-02	12	R1/4	11	36	30	23.5	21	43	8.5	35
PC 12-03		R3/8	12	32	25.5			35.5	11	59
PC 12-04		R1/2	15	34	26			49.5		
PC 16-03	16	R3/8	12	39.5	33	25	24	59.5	11	83.3
PC 16-04		R1/2	15	41.5	33.5			67	13	114
PC 1/4-01	1/4	R1/8	8	22.5	19	17	14	9	4.6	12.5
PC 1/4-02		R1/4	11	24.5			17	17		
PC 1/4-03		R3/8	12	23.5			17.5	17		
PC 5/16-01	5/16	R1/8	8	28	24	18	14	15	6	20
PC 5/16-02		R1/4	11	27	20.5		17	23	7	
PC 5/16-03		R3/8	12	24	17.5					
PC 3/8-01	3/8	R1/8	8	30.5	26.5	20	17	22.5	6	23
PC 3/8-02		R1/4	11	30	24			20	8.5	35
PC 3/8-03		R3/8	12	29.5	23		26			
PC 3/8-04		R1/2	15	30.5	22.5		21	49		
PC 1/2-02	1/2	R1/4	11	36	30	23.5	21	43	8.5	35
PC 1/2-03		R3/8	12	32	25.5			36	11	59
PC 1/2-04		R1/2	15	34	26			49.5		
PC 5/8-03	5/8	R3/8	12	39.5	33	24	24	59.5	11	83.3
PC 5/8-04		R1/2	15	41.5	33.5			68	13	114

※1/2 and 5/8 are order production.

unit:inch

MODEL	Tube dia. φD	NPT	A	B	L	C	H	Weight (g)	Orifice φMM	Eff.a. mm ²	Cv
PC 5/32-U10U	5/32	10-32UNF	0.14	0.79	0.65	0.59	7/16	6.7	1.8	1.9	0.10
PC 5/32-N1U	5/32	1/8-27NPT	0.31	0.83	0.67	0.59	7/16	9.5	3.0	5.3	0.29
PC 5/32-N2U	5/32	1/4-18NPT	0.43	0.83	0.59	0.59	9/16	16.4	3.0	5.3	0.29
PC 3/16-U10U	3/16	10-32UNF	0.14	0.87	0.73	0.67	1/2	10.2	1.8	1.9	0.10
PC 3/16-N1U	3/16	1/8	0.31	0.89	0.73	0.67	1/2	11.3	4.0	7.0	0.38
PC 3/16-N2U	3/16	1/4	0.43	0.96	0.73	0.67	9/16	18.3	4.0	7.3	0.40
PC 3/16-N3U	3/16	3/8	0.47	0.93	0.52	0.67	11/16	28.3	4.6	7.0	0.38
PC 1/4-U10U	1/4	10-32UNF	0.14	0.87	0.73	0.67	1/2	10.2	1.8	1.9	0.10
PC 1/4-N1U	1/4	1/8	0.31	0.89	0.73	0.67	1/2	10.3	4.6	12.5	0.68
PC 1/4-N2U	1/4	1/4	0.43	0.96	0.73	0.67	6/16	17.7	4.6	12.5	0.68
PC 1/4-N3U	1/4	3/8-18NPT	0.47	0.93	0.67	0.67	11/16	28.0	4.6	12.5	0.68
PC 5/16-N1U	5/16	1/8	0.31	1.10	0.94	0.71	9/16	15.6	6.0	20.0	1.08
PC 5/16-N2U	5/16	1/4	0.43	1.04	0.81	0.71	9/16	15.6	7.0	20.0	1.08
PC 5/16-N3U	5/16	3/8	0.47	0.94	0.69	0.71	11/16	22.8	7.0	20.0	1.08
PC 3/8-N1U	3/8	1/8	0.31	1.20	1.04	0.79	11/16	25.1	6.0	25.4	1.38
PC 3/8-N2U	3/8	1/4	0.43	1.18	0.94	0.79	11/16	21.7	8.5	33.7	1.83
PC 3/8-N3U	3/8	3/8	0.47	1.16	0.91	0.79	11/16	28.2	8.5	37.2	2.02
PC 3/8-N4U	3/8	1/2-14NPT	0.59	1.20	0.89	0.79	7/8	52.1	8.5	31.3	1.70
PC 1/2-N2U	1/2	1/4	0.43	1.42	1.18	0.93	7/8	47.2	8.5	43.4	2.35
PC 1/2-N3U	1/2	3/8	0.47	1.26	1.00	0.93	7/8	38.2	11.0	59.0	3.20
PC 1/2-N4U	1/2	1/2	0.59	1.34	1.02	0.93	7/8	51.8	11.0	59.0	3.20
PC 5/8-N3U	5/8	3/8	0.47	1.56	1.30	0.98	1.0	69.9	11.0	83.3	4.51
PC 5/8-N4U	5/8	1/2	0.59	1.63	1.32	0.98	1.0	77.0	13.0	114.0	6.18